

APPLICATION FOR

2. DATE SUBMITTED 06/20/2007		APPLICATION IDENTIFIER
1. TYPE OF SUBMISSION Application	3. DATE RECEIVED BY STATE	
	4. DATE RECEIVED BY FEDERAL AGENCY	
STATE APPLICATION IDENTIFIER		
FEDERAL IDENTIFIER		
5. APPLICANT INFORMATION		
Legal Name Chula Vista Police Department		Organizational Unit Chula Vista Police Department
Address (city, state, and zip code) 315 Fourth Ave. Chula Vista, California 91910-0000		Name and telephone number of the person to be contacted on matters involving this application Ed Chew (619) 691-5013
6. EMPLOYER IDENTIFICATION NUMBER (EIN) 95-6000690		7. TYPE OF APPLICANT Township
8. TYPE OF APPLICATION New		9. NAME OF FEDERAL AGENCY Bureau of Justice Assistance
10. CATALOG OF FEDERAL DOMESTIC ASSISTANCE Number: 16.580 CFDA Title: Edward Byrne Memorial State and Local Law Enforcement Assistance Discretionary Grants Program.		11. DESCRIPTIVE TITLE OF APPLICANT'S PROJECT Chula Vista Violent Crime Project
12. AREAS AFFECTED BY PROJECT City of Chula Vista, California		
13. PROPOSED PROJECT		14. CONGRESSIONAL DISTRICT(S) OF
Start Date: 09/01/2007	Ending Date: 08/31/2008	a. Applicant
		b. Project
15. ESTIMATED FUNDING		16. IS APPLICATION SUBJECT TO REVIEW BY STATE EXECUTIVE ORDER 12372 PROCESS?
a. Federal	\$299,999	Program is not covered by E.O. 12372
b. Applicant	\$172,449	
c. State	\$0	
d. Local	\$0	
e. Other	\$0	
f. Program Income	\$0	17. IS THE APPLICANT DELINQUENT ON ANY FEDERAL DEBT?
g. Total	\$472,448	N
18. TO THE BEST OF MY KNOWLEDGE AND BELIEF, ALL DATA IN THIS APPLICATION/PREAPPLICATION ARE TRUE AND CORRECT. THE DOCUMENT HAS BEEN DULY AUTHORIZED BY THE GOVERNING BODY OF THE APPLICANT AND THE APPLICANT WILL COMPLY WITH THE ATTACHED ASSURANCES IF THE ASSISTANCE IS REQUIRED.		
a. Typed Name of Authorized Representative David Bejarano	b. Title Chief of Police	c. Telephone number (619) 691-5150
d. Signature of Authorized Representative		e. Date Signed

Previous Editions Not Usable

Standard Form 424 (Rev 4-88)
Prescribed by OMB Circular A-102

Program Abstract

Chula Vista Violent Crime Project

The Chula Vista Police Department, in partnership with the San Diego County Probation Department, and with the support of the United States Attorney for the Southern District of California, is pleased to submit this application for \$299,999 for Category I: Targeting Violent Crime under the FY 2007 Edward Byrne Memorial Discretionary Grant program.

The goals of the Chula Vista Violent Crime Project are to reduce robbery and aggravated assault rates by using: 1) problem-solving policing to gather data from a variety of sources to develop a better understanding of robbery and aggravated assault problems, 2) advanced technology to monitor high-risk probationers, gang members and hot spot locations, 3) advanced crime analysis and mapping tools in police operations to direct efforts at reducing robbery and aggravated assault problems through directed patrol and investigative resources, 4) existing intra- and inter-agency task forces and units, and 5) the exchange of information about robberies and aggravated assault with the community.

Major elements of this project include crime analysis, electronic monitoring of probationers, license plate recognition technology, wireless connectivity to criminal justice databases, remote vehicle tracking, and outreach to the community. Key to this effort is the synthesis of data from a variety of sources to better direct patrol to hot robbery and aggravated assault locations and times, and better focus follow-up investigations. Police commanders and analysts with extensive experience managing similar programs will oversee and work on this 12-month project.

Program Narrative

Statement of Problem

Background

Chula Vista, California, is one of the fastest growing cities in the nation and San Diego County's second largest municipality. Its resident population increased over 29% between 2000 and 2006 with its most recent population estimate at 223,423. Located seven miles from downtown San Diego and seven miles from the busiest international border crossing in the world, Chula Vista is the crossroads of the San Diego/Baja, Mexico region. The Chula Vista Police Department has 252 sworn officers and 113 civilian staff members; the department is made up of the Patrol Operations Division, Investigations Division, Administrative Services Division, and Fiscal Operations/Research Division.

Problem Statement

Since 2003, Chula Vista has seen increases in robbery and aggravated assault rates; 2006 was no exception:

- Robbery rates increased 31% from 2003 to 2006. In 2005, there were 1.56 per 1,000; 2006 saw a 5% increase to 1.64 per 1,000.
- Gun-related robbery rates increased 134% from 2003 to 2006. In 2005, there were .41 per 1,000; there was a 10% increase in 2006 to .46 per 1,000.
- The rate of aggravated assaults increased 52% from 2003 to 2006. While the rate went down 1% from 2005 to 2006 (2.39 to 2.36, respectively), gun-related aggravated assaults increased nearly 20% (.30 per 1,000 in 2005 compared to .36 per 1,000 in 2006).
- Both robberies and aggravated assaults are concentrated in western Chula Vista (See Appendix 1).

Research and discussions with violent crime investigators, gang officers, and probation officials lead us to believe robberies and aggravated assaults are related to the actions of high-risk probationers and gang members who live in or frequent the western portion of Chula Vista.

Seventy-one percent (71%) of the 1,554 probationers in Chula Vista live in the western portion of the city (see Appendix 2). Probation data show that 20% (291 people) of the serious crime probationers in Chula Vista are on probation for robbery or aggravated assault. Of the adults whose probation was terminated in 2006, 34% were terminated because they were convicted of a new law violation while on probation (figures are not available for juveniles). Probation reports that there is little difference between a probationer's most serious current offense and the most serious offense in their probation history, leading us to believe about one-third of those on probation for robbery or aggravated assault may re-offend for the same crime.

The Chula Vista Police Department has identified over 30 different gang sets with 1,026 members that either live or work in Chula Vista, or have been arrested, stopped for investigation, or cited for traffic violations in the city. There are 198 gang members on probation who live in the City. Like robberies and aggravated assaults, gang activities are concentrated in the western portion of Chula Vista.

Using a multi-agency¹, intelligence-led, data-driven response to robbery and aggravated assault we will gather, analyze, and share information to identify and target the most dangerous locations and offenders and then direct resources at them.

Program Design and Implementation

Goals and Objectives

The **goals** of this project are to reduce robbery and aggravated assault rates in Chula Vista.

Our project **objectives** are to:

¹ See Appendix 3 for letters of support.

1. Use problem-solving policing (Eck, Spelman, et al, 1987; Goldstein, 1990) to gather data from a variety of sources (crime cases, calls for service, field interviews, gang files, probation data, etc.) to develop a better understanding of robbery and aggravated assault problems and likely perpetrators.
2. Use advanced technology to monitor high-risk probationers, gang members and hot spot locations focusing on the offender and location sides of the problem analysis triangle (Clarke and Eck, 2005).
3. Use advanced crime analysis and mapping tools² in police operations to direct efforts at reducing robbery and aggravated assault problems through increased patrol and investigative resources (using officers and investigators working overtime) and more focused efforts by specialized units (violent crime investigators, gang-enforcement, street crime officers, and JUDGE³ [Jurisdictions Unified for Drug and Gang Enforcement] officers) during their normal work hours.
4. Enhance existing intra- and inter-agency information sharing and operations.
5. Exchange information about robberies and aggravated assaults with the community.

Program Activities

The program will consist of the following activities (see Appendix 4 for a coordination plan):

- A. The department's public safety analysts will use existing crime analysis and mapping software to conduct in-depth analysis of past crime incidents at high-density crime locations to identify hot days and times, suspects or suspect groups, methods of operation, and other relevant information (Objective 1).

² Chula Vista already has access to such tools as ArcMap, Investigators' Notebook, and CopLink.

³ The JUDGE Unit is funded by a BJA grant through the San Diego District Attorney's Office and has officers from the Chula Vista Police Department, United States Border Patrol, the San Diego County Probation Department, and a designated JUDGE prosecutor from the San Diego District Attorney's Office.

- B. The analysts, officers, and investigators assigned to this project will gather information on people and vehicles in the high-density crime locations by:
- i. Partnering with San Diego County Probation Department to monitor the movements of up to 15 dangerous/high-risk probationers through GPS electronic monitoring devices⁴ (Objectives 2 and 3);
 - ii. Tracking vehicles of targeted probationers and gang-members using vehicle tracking technologies (Objectives 2 and 3).
 - iii. Collecting information on vehicles frequenting high-density crime locations using advanced mobile license plate recognition (LPR) technology (Objectives 2 and 3).
LPR is a promising method for monitoring hot areas (National Law Enforcement and Technology Center, 2006) and “a significant resource for obtaining information that can be relevant to criminal investigations” (Gordon, 1997; Long Beach Police Department, 2007); and
 - iv. Gathering and analyzing information on gang-members, probationers, and parolees who frequent high-density crime locations through surveillance and direct contact by officers in high-density crime locations (Objectives 1 and 3).
- C. The analysts will integrate the above data with new crime reports, calls for service, and other data, allowing us to identify active crime patterns, trends, and possible offenders; allocate resources; and evaluate results (Objectives 2 and 3).
- D. The analysts will produce reports, maps, and bulletins for commanders, supervisors, officers, investigators, multi-agency task forces, and the department’s public information officer about robbery and aggravated assault trends (Objectives 3, 4 and 5).

⁴ GPS monitoring generates a large amount of data that can be used for crime scene correlation and identifying movement patterns that may be precursors to criminal activity. 2007. *Optimizing the Data Generated by GPS Tracking of Offenders*, Workshop at the NIJ Mapping Research Conference, March 30, 2007, Pittsburg, PA.

- E. Directed patrol will focus on high-density locations based on the data synthesis, analysis, and reports. The purpose of this patrol is to deter offenses, identify suspects, and gather additional intelligence through contacts (field interviews, traffic stops, personal contacts, etc.) with persons frequenting the areas (Objective 3). Officers working overtime will be used to ensure attention is focused at specific locations at specific times, however, the regular beat and sector officers and supervisors will be provided the same information to help them better allocate any free time they have to these areas.
- F. Street Team/Gang Enforcement Unit and JUDGE Unit⁵ officers will increase active monitoring of probationers and gang members identified through the above data synthesis. Street Team/Gang Enforcement Unit and JUDGE Unit officers will use wireless PDAs to access the electronic monitoring data of probationers, local, regional, and state criminal justice data systems. (Objectives 2, 3, and 4)
- G. Crimes of Violence investigators will use information uncovered through the data analysis and directed patrols to help focus their investigations of robbery and aggravated assault cases (Objectives 3 and 4).
- H. Police and probation officers working on this project will deter the re-offending of probationers by monitoring the movements of high-risk probationers through electronic monitoring devices (Objective 2).
- I. Officers and investigators working on this project will increase the certainty of the punishment of apprehended offenders by:

⁵ The JUDGE Unit and the Street Team/Gang Suppression Unit share office space at the Chula Vista Police Department. The JUDGE Unit is supervised by a CVPD sergeant.

- i. Referring qualified gun-related cases to the U.S. Attorney's Office for prosecution through the federal Project Safe Neighborhoods Task Force effort⁶ (Objectives 2 and 4);
 - ii. Working with San Diego County Probation to revoke the probation of identified violators (Objectives 2 and 4);
 - iii. Referring qualified cases to the San Diego County District Attorney's JUDGE prosecutor or Gang Prosecution Unit for special attention (Objectives 2 and 4).
- J. Develop a public education awareness effort based on the detailed analysis of robbery and aggravated assaults to provide information on how to protect against robberies and encourage citizens to notify police of suspicious circumstances (Objective 5). Included in this effort will be media events and press releases announcing the project, periodic public awareness bulletins, and presentations about the project at community meetings.

Capabilities/Competencies

The Chula Vista Police Department has the staff, resources, and experience to successfully team with others to synthesize disparate data (crime cases, probation data, community surveys, etc.) and direct enforcement efforts based on this synthesis.

The captain and lieutenant overseeing the project managed the COPS-funded Institutionalizing Problem Analysis project discussed below. Two analysts working on the project have extensive experience (see Attachment 3, Project Timeline and Position Description).

Chula Vista is a member of the Automated Regional Justice Information System (ARJIS), a complex criminal justice enterprise network used by 50 local, state, and federal agencies in the San Diego region. The ARJISNet secure intranet contains data on the region's crime cases,

⁶ CVPD has been a member of this San Diego regional task force since its inception in May 2006. Chula Vista officers have received training on PSN protocols and criteria for referring gun cases to the U.S. Attorney for prosecution.

arrests, citations, field interviews, traffic accidents, fraudulent documents, photographs, gang information, and stolen property. Chula Vista officers and analysis staff routinely query ARJIS using desktop, vehicle, and hand-held computers. Analysts use ARJIS information to conduct detailed examination of crime trends.

In addition to ARJIS, Chula Vista has readily accessible, detailed, and fresh calls for service data used by analysts and officers when examining crime and disorder problems. Analysts routinely use ArcMap to examine crime and disorder problems.

The following projects highlight our ability to use a variety of data to carry out effective enforcement efforts.

Operation Safe Neighborhood

From February 2005 to February 2006, in response to several violent, high-profile crimes, the department used temporal and geographic analysis to identify high violent crime location, days, and times most likely to benefit from focused enforcement efforts. The goals of this project were to reduce violent crimes in the target area, increase citizens' feelings of safety, and increase offenders' perceptions of risk. To accomplish these goals, the project employed focused enforcement tactics and public outreach, including community meetings and media events.

This project was successful: 1) it reduced violent crime 42% in the target area at the targeted times; 2) while gun-crimes in the rest of the city stayed steady, gun crimes in the focus area dropped; 3) surveyed citizens in the target zip code reported that they felt safer as the result of project; and, 4) surveyed arrestees indicated offenders did notice an increase in police presence in the target areas and felt more vulnerable to arrest.

Institutionalizing Problem Analysis

In February 2004, the Office of Community Oriented Policing Services (COPS) of the U.S. Department of Justice selected the Chula Vista Police Department to participate in a national project to institutionalize problem analysis in policing agencies. The objective of the effort was to build and develop the knowledge, skills, and routine practices of problem analysis so that it became a habit within the Chula Vista Police Department. The project began with six patrol officers selecting different problems to address. These problems ranged from beer dashes at a convenience store to gang violence and disorder issues at bars. Early on, another six officers came to commanders requesting that they be allowed to work problem-solving projects. They selected projects that ranged from disorder problems at a trolley station and shopping center to apartment complexes experiencing a high number of calls for service.

Even though the federal funding has ended in July 2005, the department showed its commitment to problem-analysis as a tool supervisors and officers can turn to when dealing with crime and disorder problems. In addition to the 40-hour problem-oriented policing curricula in the regional academy, Chula Vista graduates receive a 2-hour local problem-solving orientation that includes presentations by the patrol captain, patrol officers, and analysts. Problem-analysis scenarios are an element of the promotion process for lieutenant, sergeant, and agent positions. A data- and analysis-driven approach continues to be used by officers and analysts in our department.

Alcohol-Free Parks

In the fall of 2005, the police department coordinated a city working group that included the Public Works and Recreation Departments and the City Attorney's Office to address citizen complaints about violent crime and disorder in city parks. While alcohol possession and

consumption are legal in city parks, the city council can ban alcohol in specific parks if they find that alcohol contributed to problems in the parks. Using detailed analysis of police calls for service, photographs, documentation by Public Works employees, and mapping of activities of park abusers and legitimate users, council banned alcohol in four parks identified as the most problematic. In addition to the alcohol ban, the council approved recommendations by the working group for physical improvements to these parks and plans for increasing the presence of legitimate users in them.

An evaluation completed one year after the ban showed that violent calls and crimes were down in all four parks (with no indication of geographic displacement), and all four parks had received physical improvements. Funds for additional improvements and activities were recently approved by council.

Slow Down, Chula Vista

On June 1, 2007, Chula Vista began educational, enforcement, and engineering responses to reduce speeding on major thoroughfares. To determine the best locations in which to concentrate speeding countermeasures, the police department, working with traffic engineering, used a variety of data to select speed management areas. The process included a geographic analysis linking road segments to speed-related collisions, speeding citations, and citizen survey data. Those findings were then combined by a subject-matter-expert team from the Engineering and Police Departments to identified high-speed areas.

Eight of the most dangerous locations are now targets for special enforcement, engineering, and public awareness strategies to encourage drivers to slow down. The City's Traffic Engineering Department gathered speed and traffic volume data for the eight locations. This

data allows the police department to identify the hot days and times on which to focus enforcement and public awareness efforts (see Appendix 5).

Impact/Outcomes, Evaluation, and Sustainment

Impact and Evaluation

Our goal is to reduce robbery and aggravated assault rates in Chula Vista. To determine our effectiveness, we will use data in ARJIS⁷, our computer-aided dispatch system, and the county Probation Department databases, to examine:

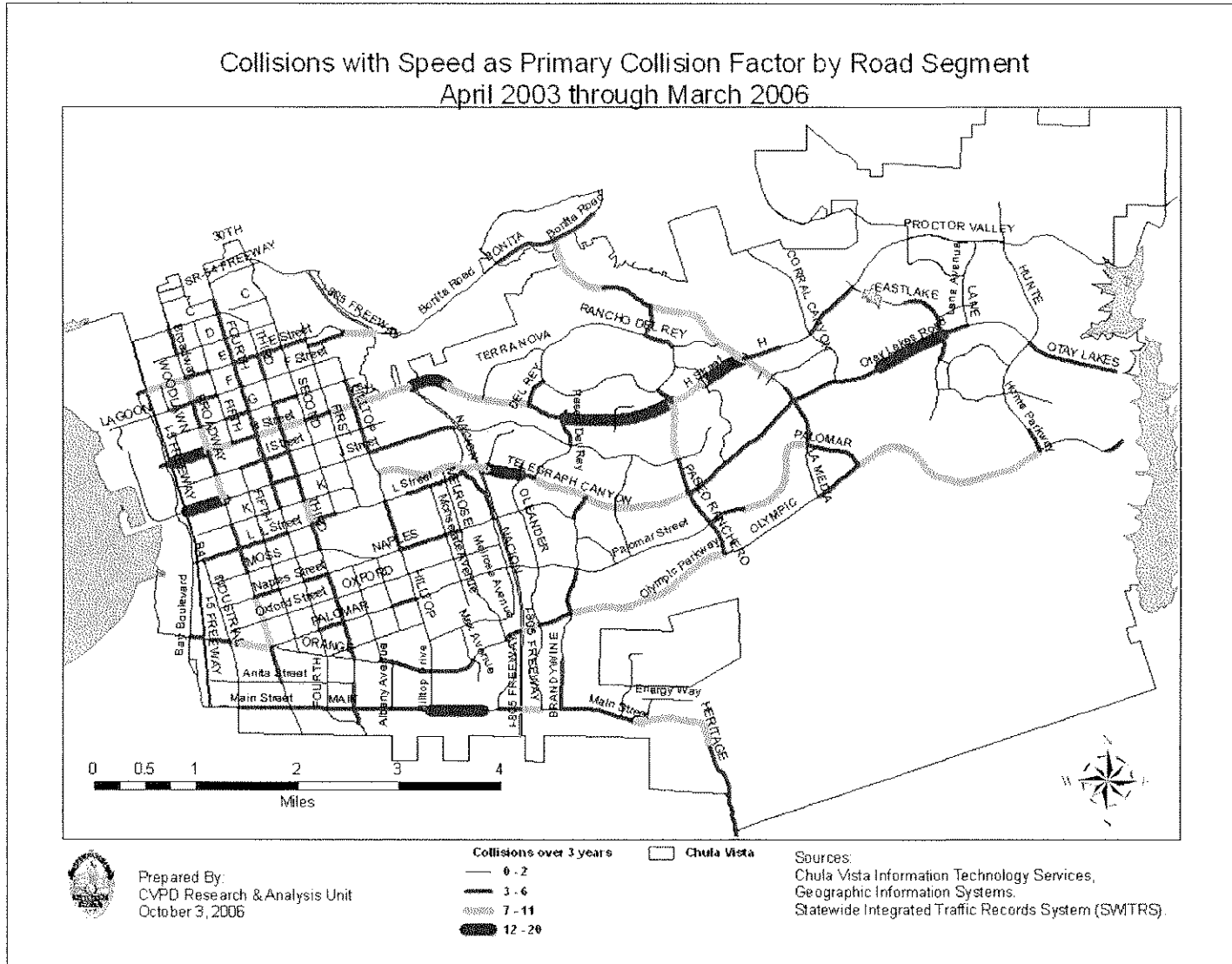
- Pre- and post-project robbery and aggravated assault rates citywide.
- The number of robberies and aggravated assaults in hot-spots.
- The number of gun-related robberies and aggravated assaults in hot spots.
- Evidence of displacement of robberies and aggravated assaults.
- The frequency of re-offending for robbery and aggravated assault by probationers living in Chula Vista and living in robbery and aggravated assault hot-spots.

Program Sustainment

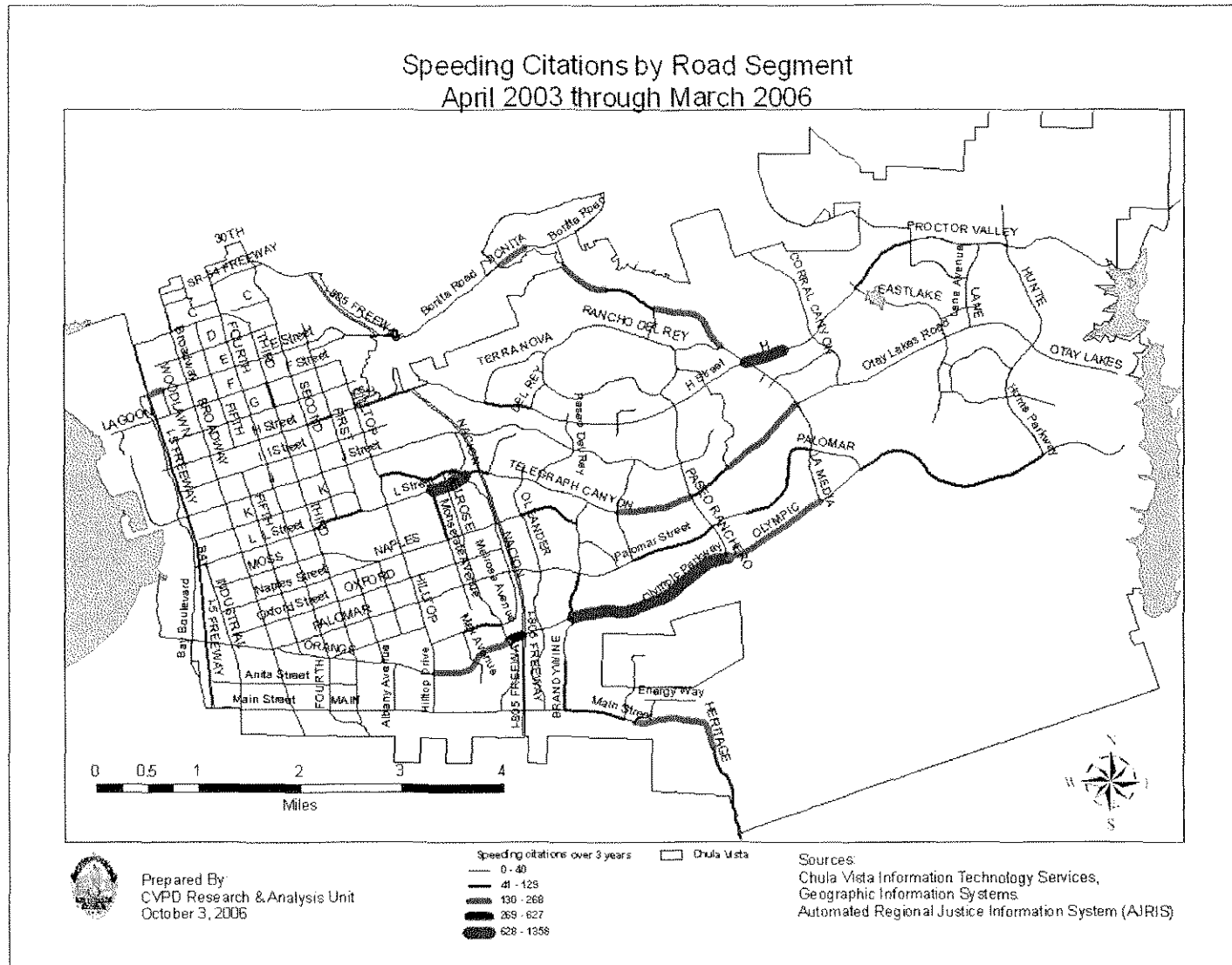
After federal funding ends, we will continue using analysts to analyze violent crimes and their locations and to produce crime bulletins to direct the patrol efforts of regular beat and sector officers; the Street Team/Gang Suppression Unit, JUDGE Unit, and Crimes of Violence Unit will continue their enhanced monitoring of probationers and gang members identified as being involved in violent crimes; and continue to use the license plate recognition technology at problem locations. Use of overtime officers depends on the problem and budget. We will work with the County Probation Department to find continued funding for the lease of electronic monitoring systems for probationers to continue that element of this project.

⁷ Automated Regional Justice Information System

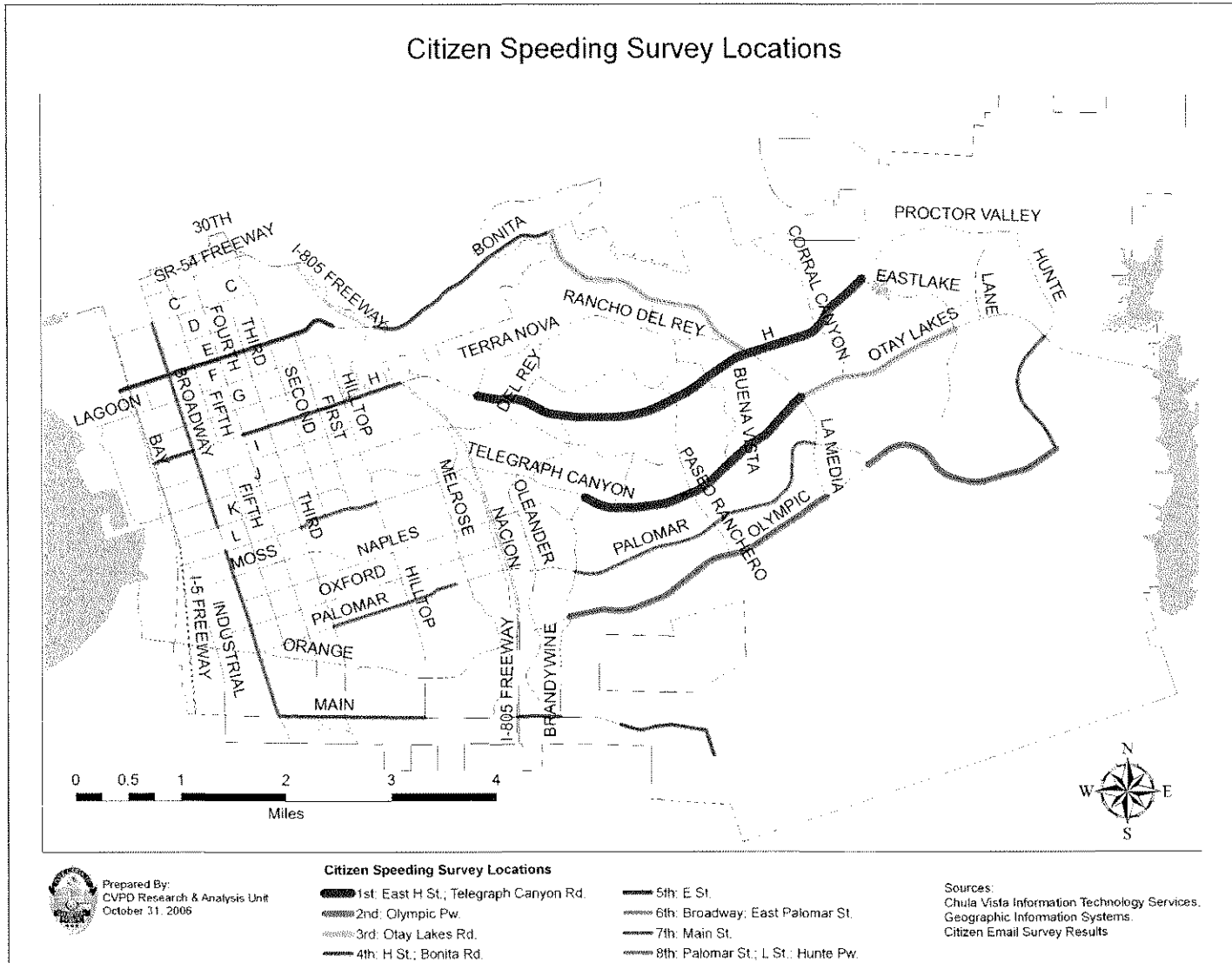
Appendix 5 Speed Management Area Selection Process Maps



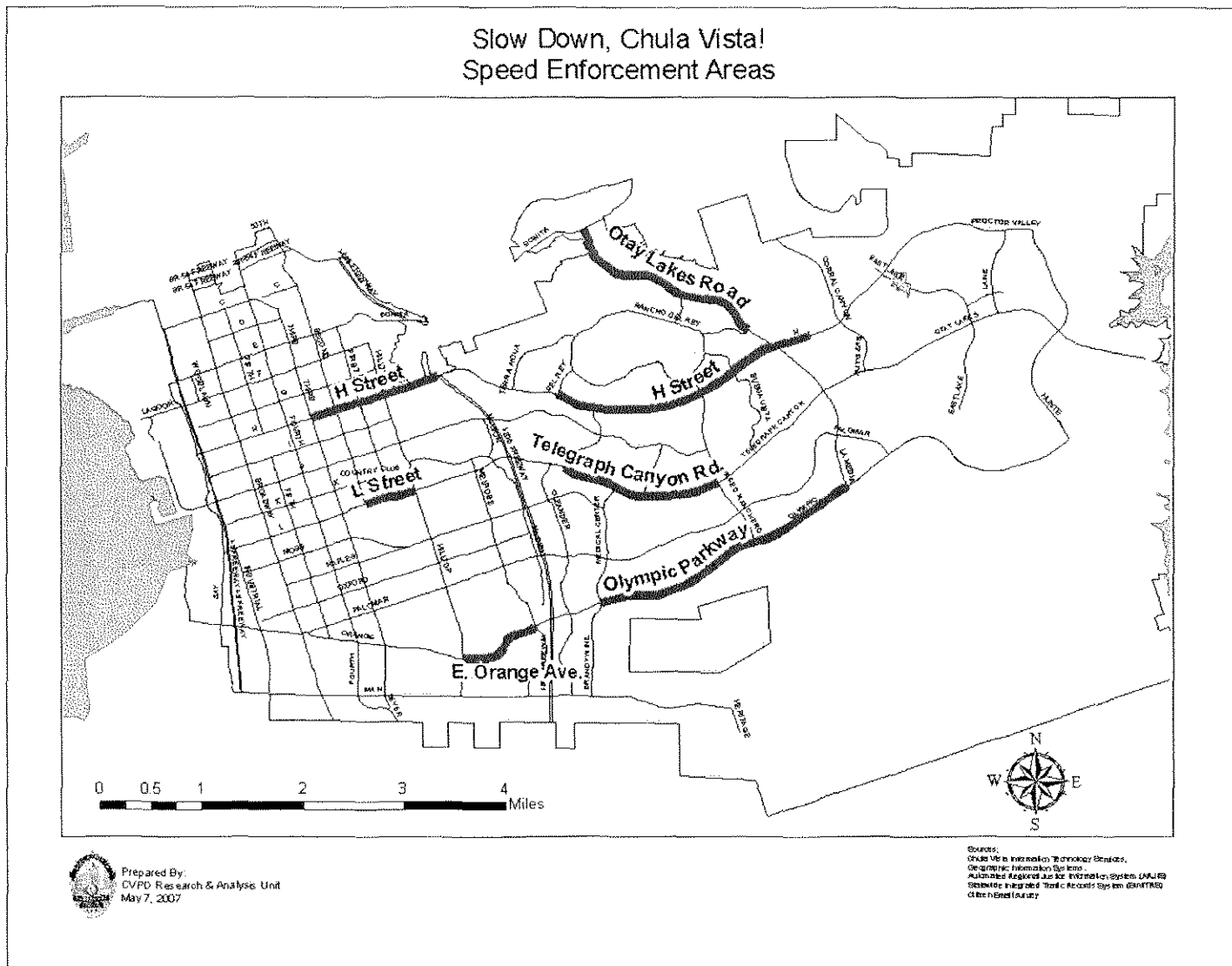
Appendix 5 Speed Management Area Selection Process Maps



Appendix 5 Speed Management Area Selection Process Maps



Appendix 5 Speed Management Area Selection Process Maps



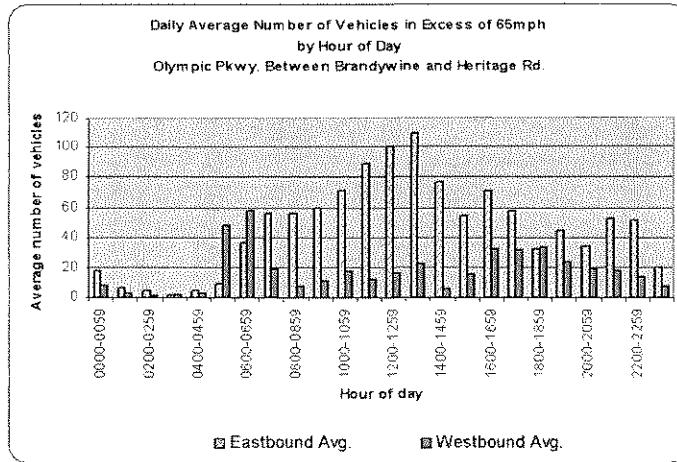
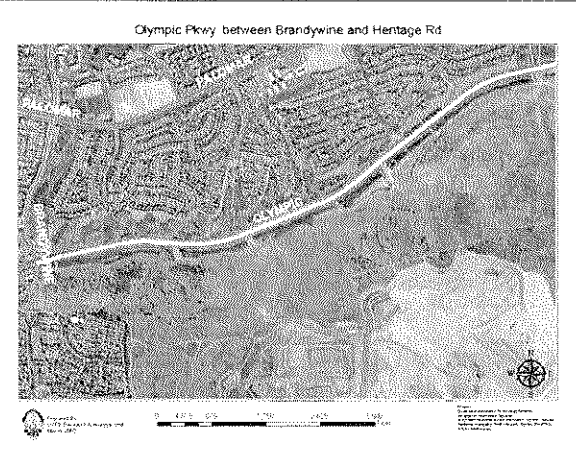
Appendix 5 Speed Management Area Selection Process Maps



Speed Enforcement Bulletin Olympic Pkwy. Between Brandywine Ave. and Heritage Rd.

Olympic Parkway between Brandywine Ave. and Heritage Rd. is one of the locations selected for special speed enforcement in the *Slow Down, Chula Vista!* campaign running June 1 through December 31, 2007.

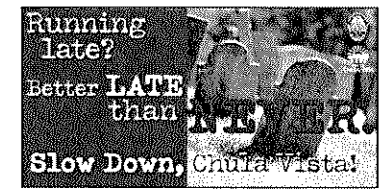
Traffic Engineering placed speed/traffic strips on Olympic Parkway Monday, February 12 through Monday, February 19, 2007. The chart below shows the estimated daily average number of vehicles exceeding 65 mph, by hour of day, based on that data. Speeds over 65 mph are a violation of CVC 22349(a).



The Traffic Unit will conduct special speed enforcement efforts on this portion of Olympic Parkway on Friday, June 1, 2007.

Officers are encouraged to conduct their own speed enforcement efforts along this stretch of roadway throughout the *Slow Down, Chula Vista!* campaign.

For more information contact Officer Ryan Mullen at 619-691-5661.



For Chula Vista Police Department Use Only

Prepared by CVPD Research and Analysis Unit, May 30, 2007

Project Timeline and Position Descriptions

Project Timeline

The timeline shown below lays out the schedule for specific tasks and activities.

ID	Task Name	Start	End	2007				2008								
				Sep	Oct	Nov	Dec	Jan	Feb	Mar	Apr	May	Jun	Jul	Aug	
1	New analyst starts work	9/17/2007	9/17/2007	▲												
2	Order electronic monitors, LPRs, PDAs, and vehicle trackers	9/3/2007	9/14/2007	■												
3	Receive electronic monitors, LPRs, PDAs, and vehicle trackers	9/17/2007	9/28/2007	■												
4	Deliver electronic monitors to Probation	10/1/2007	10/1/2007	▲												
5	Probation assigns monitors to probationers	10/15/2007	9/12/2008													
6	Conduct crime/location analysis	9/17/2007	9/12/2008													
7	Collect license plate data at hot spots	10/1/2007	8/29/2008													
8	Collect electronic monitoring data of probationers	10/15/2007	9/12/2008													
9	Conduct overtime directed patrols	10/1/2007	8/29/2008													
10	Special monitoring of target persons by JUDGE, Street Team, and Gang Units	10/15/2007	8/29/2008													
11	Publish monthly crime bulletins/maps for officers	9/14/2007	8/29/2008	▲	▲	▲	▲	▲	▲	▲	▲	▲	▲	▲	▲	▲
12	Publish public information bulletins	9/3/2007	8/29/2008	▲			▲				▲			▲	▲	

Descriptions for Key Positions

This project will be managed by [redacted] and [redacted] at no cost in grant funds.

- [redacted] will be in over-all command of the project. He has been a police officer with the Chula Vista Police Department for 23 years. He is currently assigned as the Patrol Captain in charge of Patrol Operations (including Dispatch), Traffic Bureau, Street Team/Gang Suppression Unit, JUDGE Unit, SWAT Team, Mobile Field Force, and the Mounted and Reserve Officer programs. He has worked in the patrol division as an officer, agent, sergeant, and lieutenant. His specialty assignments have included supervising the Juvenile Unit and Family Protection Unit, and being a member and commander of the SWAT Team. [redacted] also managed the COPS-funded Institutionalizing Problem-Analysis project. He will devote 10% of his time to this project.

- [REDACTED] will exercise day-to-day command of the project, devoting 20% of his time to the project **at no cost in grant funds**. [REDACTED] has been with the Chula Vista Police Department for 28 years. He is commander of the Street Team/Gang Suppression and JUDGE Units. He will supervise the analysts assigned to the project, schedule officer overtime, and oversee efforts by the Street Team/Gang Suppression and JUDGE Units.

b6
|

Three public safety analysts will work on this project:

- Senior public safety analyst, [REDACTED], will devote 5% of her time, **at no cost in grant funds**, to oversee the analytical activities of the project. Since joining the department in 2000, she has researched a variety of citywide and neighborhood-level crime and disorder problems, including auto theft, robbery, and motel crime. [REDACTED] has 19 years experience in police research, policy development, and grant management. Prior to working for the Chula Vista Police Department, she spent five years as a social science analyst at the Office of Community Oriented Policing Services with the U.S. Department of Justice and seven years as a researcher at the Police Executive Research Forum. [REDACTED] is an author of *Problem-Solving Tips: A Guide to Reducing Crime and Disorder through Problem-Solving Partnerships*, and *Disorder at Budget Motels*, and a co-author of "Primary Data Collection: A Problem-Solving Necessity."
- Public safety analyst, [REDACTED], will work on the project, **at no cost in grant funds**. He will devote 30% of his time to the project assisting the new analyst. [REDACTED] has been with the department since January 2005. He has 38 years of experience in law enforcement operations, research, training, and policy development. Before joining Chula Vista Police Department, he was a Visiting Scientist at the National Institute of Justice (NIJ). From 1986

b6
|

to 1999, ██████████ was a Senior Researcher at the Police Executive Research Forum (PERF) managing several Bureau of Justice Assistance (BJA) projects, including problem-oriented policing projects. ██████████ served 16 years with the Alexandria (Virginia) Police Department – as an officer, investigator, sergeant, and lieutenant. ██████████ is a co-author of *Problem Solving: Problem-Oriented Policing in Newport News*, *Addressing Community Gang Problems: A Model for Problem Solving*, and *Finding and Addressing Repeat Burglaries*.

66

- One public safety analyst will be **hired with grant funds** to work on this project full-time. This person will be responsible for systematically examining quantitative and qualitative data; collecting and analyzing statistical and other data characteristics related to the problems of robbery and aggravated assault; preparing summaries of these problems; developing, initiating and disseminating analytical information to sworn and civilian staff, as well as community members; and preparing detailed reports, correspondence and summaries as required related to this project.

The Street Team/Gang Suppression Unit and the JUDGE Unit will devote 5% of their time to this project at **no cost in grant funds**. These teams will be used to increase monitoring of gang-members and probationers identified as high-risk as part of this project.

- The Street Team/Gang Suppression Unit has one sergeant, one agent, and four officers. This unit is responsible for monitoring gang-related activities and crimes, special deployment to identified problem locations, and other specialized assignments that may arise.
- The JUDGE Unit (Jurisdictions Unified for Against Drug and Gang Enforcement) has one sergeant, one agent, four Chula Vista Police Department officers, one United States Border Patrol agent, and one San Diego County Probation officer. The unit targets offenders who

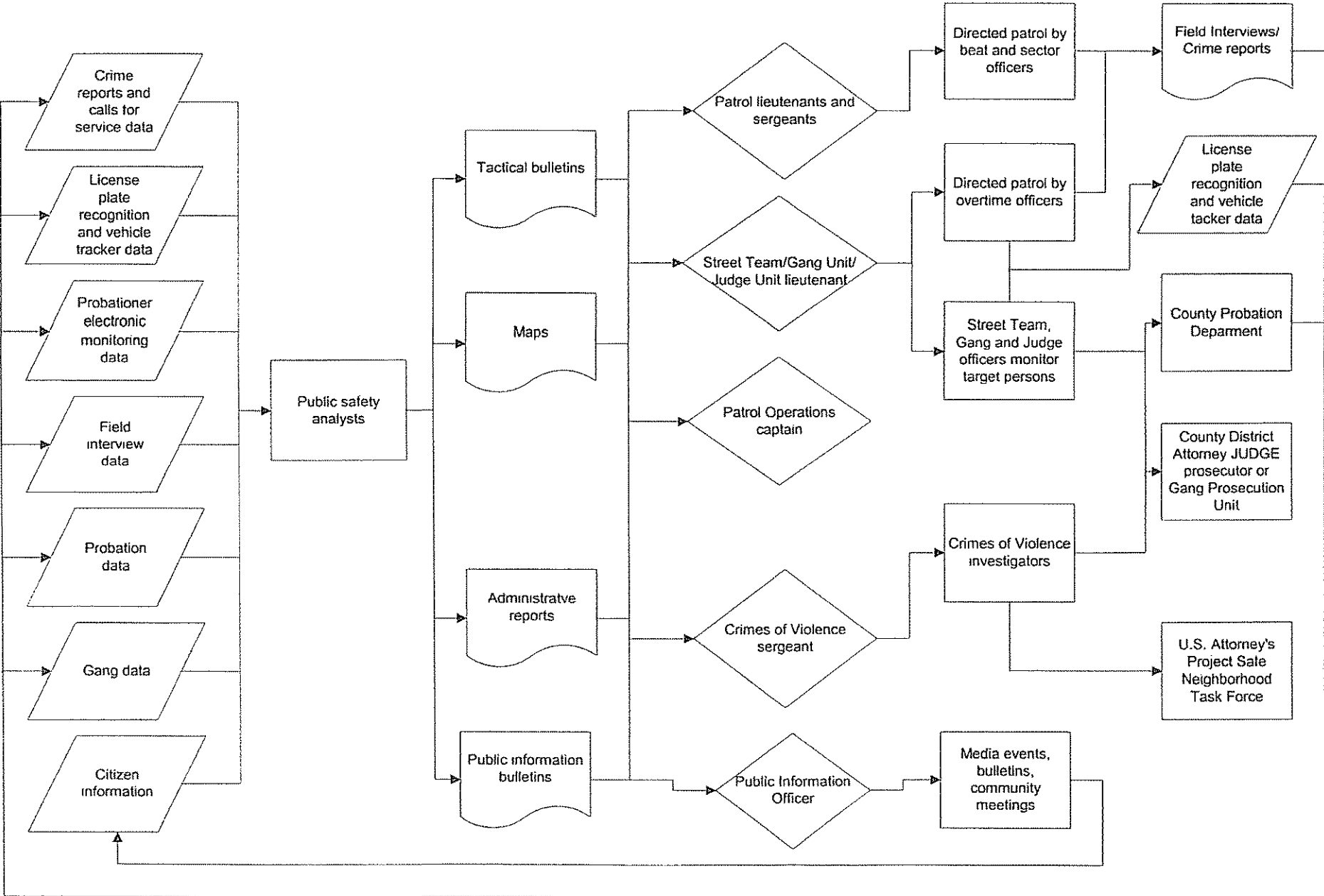
are on felony probation or parole who re-offend. Targets are subjected to vertical prosecution with the assistance of a dedicated JUDGE prosecutor from the San Diego County District Attorney's Office.

One sergeant from the Criminal Investigations Unit will devote 5% time to this project **at no cost in grant funds.**

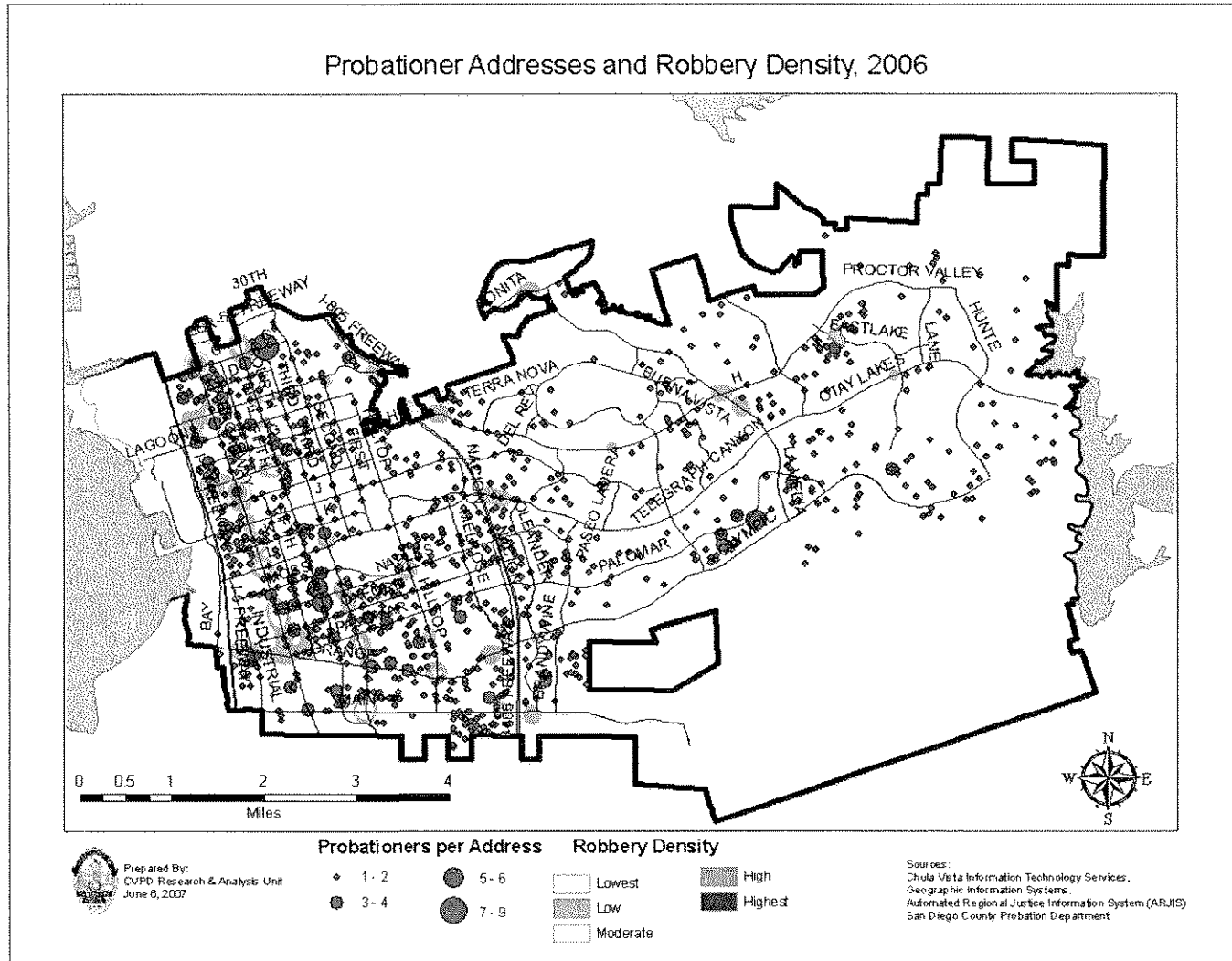
- [REDACTED] (Criminal Investigations Division, Violent Crime Unit) is Chula Vista's representative to the federal Project Safe Neighborhood Task Force; her responsibilities will include referring qualified gun-related cases to the U.S. Attorney's Office for prosecution and overseeing other violent crime investigations arising from this project. [REDACTED] has been with the department 18 years and has worked as an officer in patrol and as an investigator in the Regional Auto Theft Task Force, the Family Protection Unit, and the Crimes of Violence Unit. She has been the supervisor of the Crimes of Violence Unit for the past 2 years.

b6

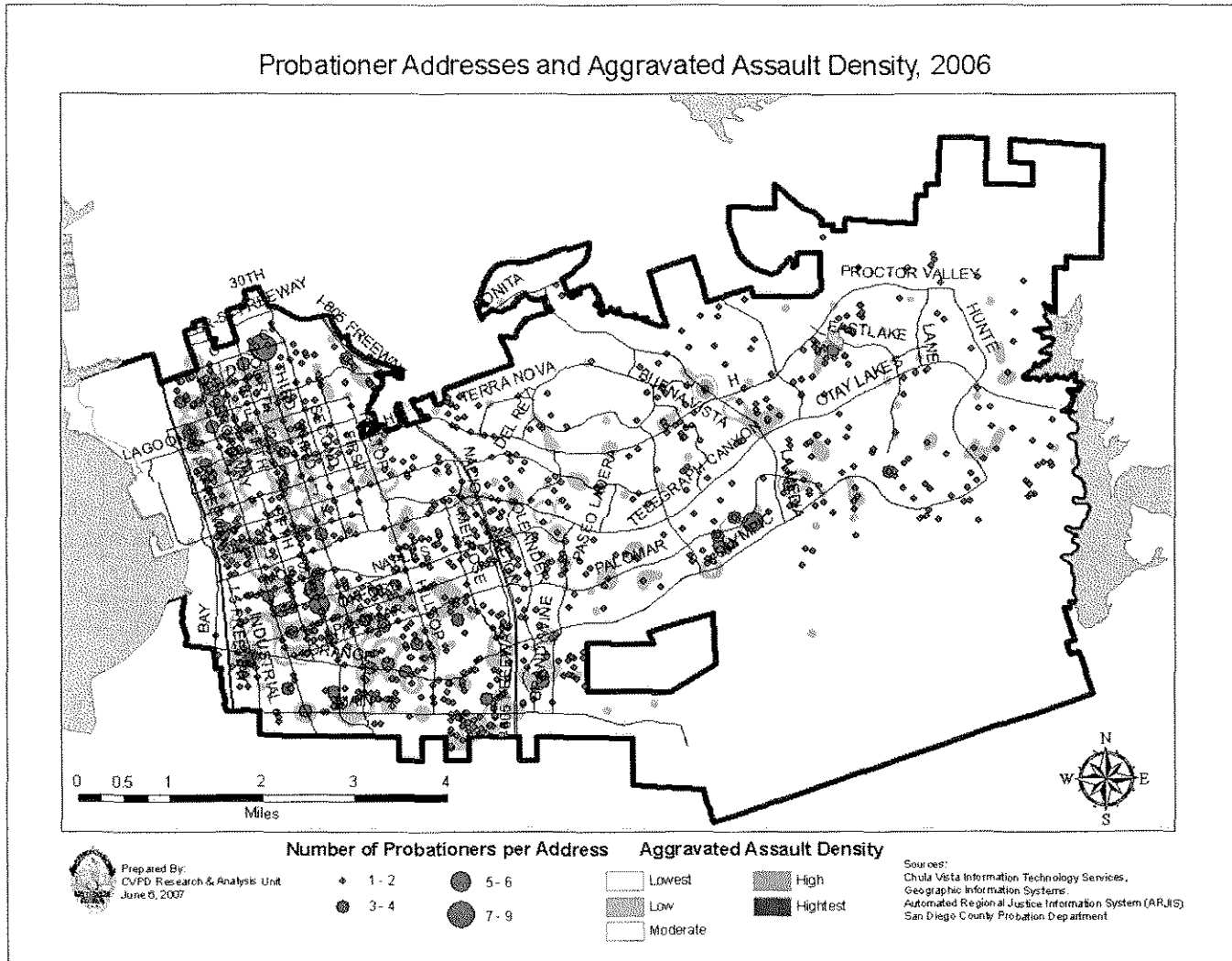
Chula Vista Violent Crime Project Coordination Plan



Appendix 2
Probationer Addresses and Number of Probationers and
Geographic Density Analysis of Robberies and Aggravated Assaults in Chula Vista



Appendix 2
Probationer Addresses and Number of Probationers and
Geographic Density Analysis of Robberies and Aggravated Assaults in Chula Vista



References

- Clarke, Ronald & Eck John
2005 *Crime Analysis for Problem Solvers: In 60 Small Steps*. Washington, DC: U.S. Department of Justice
- Eck, John, Spelman, William, et al.
1987 *Problem-Solving: Problem-Oriented Policing in Newport News*. Washington, DC: U.S. Department of Justice.
- Florida Department of Corrections
2003 *A Controlled Study of the Effects of Electronic Monitoring and Officer Caseload on Outcomes of Offenders on Community Control*. Tallahassee: Florida Department of Corrections, Bureau of Research and Data Analysis.
- Florida Legislature
2005 *Electronic Monitoring Should be Better Targeted to the Most Dangerous Offenders*. Report no. 05-19. Tallahassee: Office of Program Police Analysis and Government Accountability.
- Gordon, Arthur
2007 "License Plate Recognition Technology: Innovation in Law Enforcement Use." *FBI Law Enforcement Bulletin*. Volume: 76 Issue: 3. Washington, DC: Federal Bureau of Investigation.
- Long Beach Police Department
2007 Personal communication with Sgt. Chris Morgan of the Long Beach (CA) Police Department, June 7, 2007.
- National Law Enforcement and Corrections Technology Center
2006 "L.A. Experience." *Techbeat*. Washington, DC: National Law Enforcement and Corrections Technology Center

Budget and Budget Narrative

The Chula Vista Police Department submits the following budget to the Bureau of Justice Assistance (BJA) for the Chula Vista Violent Crime Project.

A. Personnel

Position	Computation	Cost
Analyst	\$67,480 x 100%	\$67,480
Officer overtime	2,000 hours x \$58.94	\$117,887
Total Personnel		\$185,367

Personnel narrative: One public safety (crime) analyst will be hired to devote 100% of his/her time to this project. Analyst duties will be to gather and analyze data from crime reports, license plate readers, and electronic monitoring devices. The analyst will produce reports and maps for use by sworn personnel working on this project. This project calls for directed patrol at high-density robbery and aggravated assault locations and increased investigations by officers and investigators working overtime; 2,000 hours of overtime have been budgeted for this effort at a cost of \$58.94 per hour.

B. Fringe Benefits

Benefit type	Computation	Cost
<i>Public Safety Analyst Position</i>		
Public agency retirement	\$2,531 x 100%	\$2,531
Medicare	\$ 978 x 100%	\$ 978
<i>Officer Overtime</i>		
FICA	\$117,887 x 1.45%	\$1,709
Total fringe benefits		\$5,218

Fringe benefit narrative: Costs include Public Agency Retirement Services (PARS) and Medicare benefits for the public safety analyst and 1.45% FICA charged to the overtime hours for officers and investigators.

C. Travel

Purpose	Location	Item	Computation	Cost
DOJ sponsored conference	Washington, DC	Airfare	2 people x \$950 each	\$1,900
DOJ sponsored conference	Washington, DC	Per Diem	2 people x \$252 a day x 3 days	\$1,512
Total travel				\$3,412

Travel narrative: We assumed sending two people to a DOJ-sponsored conference related to this project. Since the exact date and location is unknown, airfare costs are estimates based on a Washington, DC location; per diem costs are from the GSA's domestic per diem website.

D. Equipment – Non-expendable equipment with a useful life of more than two years and an acquisition cost of \$5,000 or more per unit.

Equipment item	Computation	Cost
License plate reader (LPR)	2 readers x \$16,625 each	\$33,250
LPR software	1 package x \$1,755	\$ 1,755
LPR install and training	\$7,240	\$ 7,240
Tax	7.75% of total	\$ 3,274
Total equipment		\$45,519

Equipment narrative: This project calls for two mobile license plate recognition (LPR) devices installed on two police cars. This technology will gather information on vehicles frequenting high-density robbery and aggravated assault locations. The information gathered will then be mined and analyzed to aid in investigations and deployment. Costs are based on estimate from an LPR vendor.

E. Supplies

Supply item	Computation	Cost
Wireless hand-held devices	10 x \$350	\$3,500
Remote vehicle trackers	9 x \$377	\$3,393
Tax	7.75% of total	\$ 534
Total supplies		\$7,427

Supplies narrative: Officers and investigators working on this project will use wireless handheld devices to access a variety of criminal justice-related databases, include the Automated Regional Justice Information System (ARJIS), California Departments of Justice, Motor Vehicles, and Parole, San Diego County Probation, county booking photos, and NCIC. Remote trackers will monitor targeted persons traveling in vehicles. Wireless device costs are based on current costs for wireless devices used in San Diego County. Vehicle tracker costs are based on an estimate from a tracker vendor.

F. Construction – NONE

G. Contracts

Contract item	Computation	Cost
One-year lease of probationer GPS monitoring system	15 devices x 365 days x \$7.40 a day	\$40,515
Total		\$40,515

Contract narrative: Monitoring of high-risk probationers is a critical element of this project. We will contract with a provider for lease of 15 devices, airtime, and data capture. This

information will then be available to the analysts, investigators, and officers working on this project. Cost is based on an estimate from vendor.

H. Other costs

Description	Computation	Cost
Hand-held air-time fees	\$55 a month x 10 devices x 12 months	\$ 6,600
Vehicle tracker air-time fees	\$55 a month x 9 devices x 12 months	\$ 5,940
Total other costs		\$12,540

Other costs narrative: The wireless hand-held devices and the vehicle trackers require the purchase of air-time for operation; air-time costs are based on current subscription costs for the department.

I. Indirect costs – NONE

Budget Summary

Category	Amount
Personnel	\$185,367
Fringe	\$ 5,218
Travel	\$ 3,412
Equipment	\$ 45,519
Supplies	\$ 7,427
Construction	\$ -
Consultants/contracts	\$ 40,515
Other	\$ 12,540
Total Direct	\$299,999
Indirect costs	\$ -
Total project costs	\$299,999
Federal request	\$299,999
Non-federal amount (Chula Vista match)	\$172,449

While a match is not required, the Chula Vista Police Department will dedicate \$172,449 in staff time to this project as shown in the table below.

Chula Vista Staff Time Match		
Position	Percent of time	Cost
Police Captain	10%	\$ 21,439
Police Lieutenant	20%	\$ 34,407
Sr. Public Safety Analyst	5%	\$ 5,594
Public Safety Analyst	30%	\$ 29,266
Street Team/GSU/JUDGE Units (2 sergeants, 2 agents, 8 officers)	5%	\$ 74,465
Detective Sergeant	5%	\$ 7,278
Total		\$172,449

The BJA grant announcement suggested applicants use a minimum of 10% of the grant funds for justice information sharing. We plan to use approximately 35% for this purpose, including technologies to gather information (license plate readers, electronic monitoring devices, and vehicle trackers) and for purchasing wireless, hand-held devices that provide street officers to have access to local, regional, state, and national databases.



County of San Diego

David E. Cranford
CHIEF PROBATION OFFICER (Acting)
(659) 514-3148
FAX: (659) 514-3121

DEPARTMENT OF PROBATION
POST OFFICE BOX 23597, SAN DIEGO, CALIFORNIA, 92193-3597

June 19, 2007

Rick Emerson
Chief of Police
Chula Vista Police Department
315 Fourth Ave
Chula Vista, CA 91910

Dear Chief Emerson:

I am pleased to submit this letter of support for the Chula Vista Police Department's application for an Edward Byrne Memorial Discretionary Grant from the Bureau of Justice Assistance.

The Probation Department looks forward to working with your department on this project to address the rising robbery and aggravated assault rates in Chula Vista. Specifically, we will assist in identifying high-risk probationers and fitting them with GPS-enabled tracking devices for monitoring by the police department. In addition, our probation officer currently assigned to the JUDGE Unit in Chula Vista will continue to act as a conduit for information between our two departments on probation-related investigations.

We commend Chula Vista Police Department in their efforts to address the rising rates of robbery and aggravated assault in Chula Vista and look forward to our continued partnership.

Sincerely,

DAVID E. CRANFORD
CHIEF PROBATION OFFICER (Acting)



U.S. Department of Justice

United States Attorney
Southern District of California

KAREN P. HEWITT
United States Attorney

(619) 557-5690
Fax (619) 557-5782

San Diego County Office
Federal Office Building
880 Front Street, Room 6293
San Diego, California 92101-8893

Imperial County Office
321 South Waterman Avenue
Room 204
El Centro, California 92243-2215

June 12, 2007

Domingo S. Herraiz
Director, Office of Justice Programs
United States Department of Justice
810 7th Street, N.W.
Washington, D.C. 20531

Re: Chula Vista Police Department, Chula Vista, California
Application for Funding - Edward Byrne Memorial Discretionary Grants Program
FY 2007 Competitive Grant Announcement

Dear Mr. Herraiz:

The United States Attorney's Office for the Southern District of California supports the Chula Vista Police Department in their efforts to apply for participation in the Edward Byrne Memorial Discretionary Grants Program, FY 2007 Competitive Grant Announcement. I am writing this letter of support to be added to Chula Vista Police Department's application for funding. In addition to being a part of the Project Safe Neighborhoods Task Force, members of the Chula Vista Police Department participated in the Southern District of California Gun Crime Prosecution Protocol "Train-the-Trainers" workshop, and firearms training sessions that focused on federal firearms law, firearms identification, firearms tracing, and hidden compartments.

We look forward to continuing to work with the Chula Vista Police Department as part of the Project Safe Neighborhoods Task Force and support their efforts to receive recognition in the Edward Byrne Memorial Discretionary Grants Program. Thank you for your consideration.

Sincerely yours,

KAREN P. HEWITT
United States Attorney

cc: Chula Vista Police Department

Appendix 1

Geographic Density Analysis of Robberies and Aggravated Assaults in Chula Vista

