



BOSS® 3.0 BACK OFFICE SYSTEM SOFTWARE

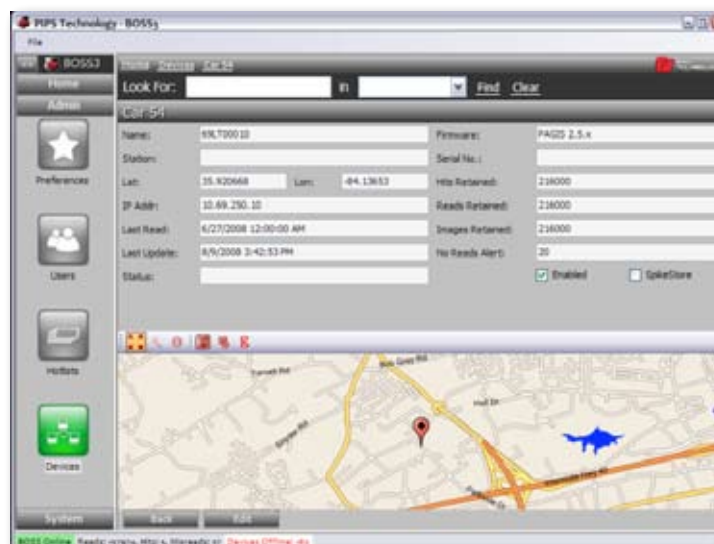
> Features

- Add, delete or modify user privileges for security reasons
- Add databases of interest and synchronize data across deployments
- Seamless BOSS-to-BOSS sharing of hotlists, reads and alerts
- Setup instant remote notifications of database hits via e-mail or text messaging
- Map of reads and hits based on GPS coordinates
- Data networking and dispatch client
- Query historical data on partial plate, date/time, geographic location with search radius and more
- Automatic monitoring of numerous hotlists for updates with synchronization across all mobile and fixed deployments
- Improved security, adheres to U.S. FIPS data security standard (AES 256-bit encryption)
- Built-in Active Directory/LDAP user authentication integration
- Improved mapping (GIS) functionality
- Support for secure handling of covert, sensitive hotlists
- Allows hotlist data import from "any source, any format"
- Real-time monitoring and alerting from multiple ALPR cameras
- Multi-language and internationalization support

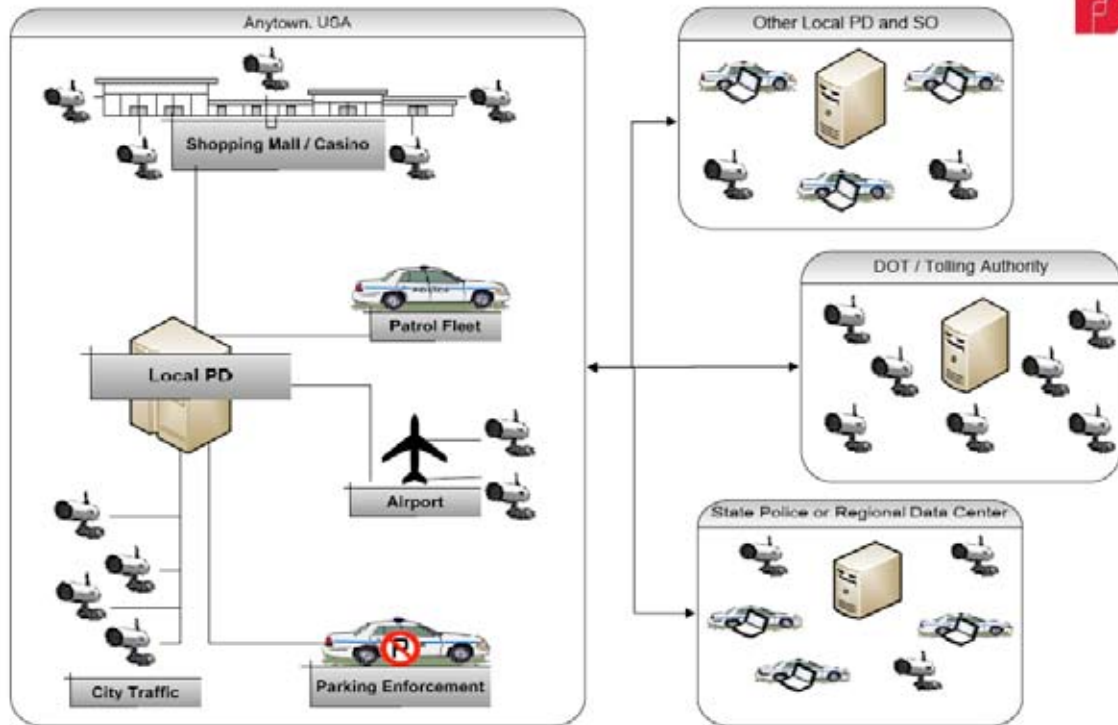


Manage users and data from both mobile and fixed Automated License Plate Recognition (ALPR) deployments

Provides a central repository for all captured license plate data as well as the tools to support data analysis, data queries and reporting



> Specifications



ALPR systems can generate vast amounts of data. The Federal Signal BOSS system is designed to enable law enforcement agencies to organize and archive data collected from multiple mobile and fixed site ALPR deployments.

BOSS also includes user and database management. The user administration functions enable the administrator to set different system access levels based on user responsibility. Within the BOSS system, new users can be created and existing users can be deleted or modified. Additionally, the BOSS system is used to import, update and create databases.

Users of the BOSS system can query the data against multiple search parameters including time, date, full or partial plate, location and user. The BOSS system can also map all locations related to a single plate to track vehicle movements. The systems web interface enables data to be easily shared across multiple locations and agencies.

Benefits

- Ease of administration
- Easy access to data
- Simplifies data-sharing with other agencies
- Powerful analysis and intelligence
- Employs a User-Friendly and intuitive “smart client”
user interface application.
- “Zero administration” deployment
- Supports data import from competitors’ systems



A Federal Signal Company

USA: 804 Innovation Drive, Knoxville, TN 37932-2562 USA

UNITED KINGDOM: York House School Lane, Chandlers Ford, Eastleigh, Hampshire SO53 4DG

800.548.7229 • pipstechnology.com

For more public safety information, visit federalsignal.com/publicsafety