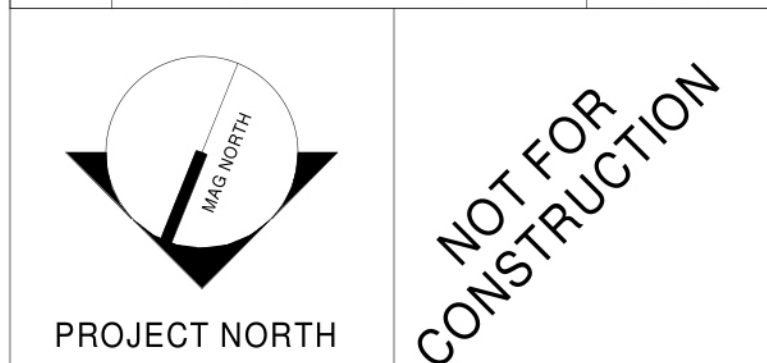


PLUMBING SYMBOLS			PLUMBING ABBREVIATIONS			
SYMBOL	ABV.	DESCRIPTION	ABV.	DESCRIPTION	ABV.	DESCRIPTION
	HW	HOT WATER PIPING	ADA	AMERICANS WITH DISABILITIES ACT	INV.EL.	PIPE INVERT ELEVATION
	HWR	HOT WATER RETURN PIPING	A.F.F.	ABOVE FINISH FLOOR	IW	INDIRECT WASTE
	CW	COLD WATER PIPING	CA-1	COMPRESSED AIR CONNECTION	KW	KILOWATT
	THW	TEMPERED HOT WATER	CFM	CUBIC FEET PER MINUTE	LAV	LAVATORY
	W	SANITARY WASTE PIPING	CH-1	REMOTE CHILLER (ELEC. WATER COOLER)	LBS	POUNDS
	W	UNDER SLAB SANITARY WASTE PIPING	CPA	COMPRESSED AIR EQUIPMENT	MR	MOP RECEPTOR
	V	VENT PIPING	DIA.	DIAMETER	MV	MIXING VALVE
	PW	PUMPED WASTE	DN	DOWN	N/A	NOT APPLICABLE
	IW	INDIRECT WASTE	DU	DISTRIBUTION UNIT	NG	NATURAL GAS
	CA	COMPRESSED AIR	DW	DISHWASHER	PPM	PARTS PER MILLION
	CD	CONDENSATE DRAIN	DWV	DRAINAGE, WASTE, & VENT	PRV	PRESSURE REDUCING VALVE
	V	INDIRECT WASTE VENT	EE	EMERGENCY EQUIPMENT	PSI	POUNDS PER SQUARE INCH
	RW	RAINWATER PIPING	EWC	ELECTRIC WATER COOLER	PTX	PLUMBING THERMAL EXPANSION TANK
	RW	UNDER SLAB RAINWATER PIPING	EPH	ELECTRIC WATER HEATER	SH	SHOWER
	IA	N.G. WATER HEATER INTAKE AIR	FD	FLOOR DRAIN	SK	SINK
	EA	N.G. WATER HEATER EXHAUST AIR	FT	FEET	SP	SUMP PUMP
	CH	CHILLED WATER PIPING	GAL.	GALLONS	TP	TRAP PRIMER
	HT	HEAT TRACE	GPH	GALLONS PER HOUR	T&P	TEMPERATURE & PRESSURE RELIEF VALVE
	G	GAS PIPING	GPM	GALLONS PER MINUTE	TYP.	TYPICAL
		PIPE TURNING UP	GWH	GAS WATER HEATER	UR	URNAL
		PIPE TURNING DOWN	HP	HORSE POWER	WB	WALL BOX
		FLOOR CLEANOUT	HWR	HOT WATER RECIRCULATION	WC	WATER CLOSET
		WALL OR END OF LINE CLEANOUT	HWT	HOT WATER TANK	WH	WALL HYDRANT
		PLUMBING FIXTURE NUMBER - REFER TO PLUMBING FIXTURE SCHEDULE	IN	INCHES		
		FLOOR DRAIN				
		ROOF DRAIN				
		SHUT-OFF VALVE				
		BALANCING VALVE				
		CHECK VALVE				
		PIPE CAP				
		THERMOMETER				
		PRESSURE GAUGE				
		TECHNICAL NOTE: APPLIES ONLY TO SHEET IN WHICH IT APPEARS.				
		FOOD SERVICE EQUIPMENT TAG- REFER TO FOOD SERVICE EQUIPMENT DRAWINGS FOR PLUMBING REQUIREMENTS				
		TRAP PRIMER				
		TRAP PRIMER DISTRIBUTOR				
		WATER METER				
		PRV PRESSURE RELIEF VALVE				
		FLANGED CONNECTION				
		ECCENTRIC REDUCER				
		DIRECTIONAL FLOW ARROWS				
		STRAINER				
		UNION				
		DRAIN OFF				
		BACKFLOW PREVENTION ASSEMBLY W/ SHUT-OFF VALVES & STRAINER				
		INDIRECT WASTE FUNNEL & DRAIN PIPE				
		CIRCULATION PUMP				
		PIPE FREEZE ORIGIN OR END POINT - AS INDICATED NUMBER INDICATES PIPE FREEZE PROTECTION ZONE.				
		TEMPERATURE & PRESSURE RELIEF VALVE				

0	75% CONSTRUCTION DOCUMENTS	17 DEC 2019
REV.	DESCRIPTION	DATE



WBRC
ARCHITECTS • ENGINEERS

WWW.WBRCE.COM
BANGOR, MAINE 207-947-4511
PORTLAND, MAINE 207-828-4511
SAKASOTA, FLORIDA 941-556-8757

**40A MANSON LIBBY ROAD
GSA FITOUT**
40 MANSON LIBBY ROAD
SCARBOROUGH, ME 04074

SHEET TITLE:	
WBRC CAD FILE:	GRAPHIC SCALE:
PROJECT No. 4290.10	0'
SCALE: 1/4" = 1'-0"	1'
PROJECT MANAGER: [Redacted]	SHEET No. P-001
DRAWN BY:	
CHECKED BY:	

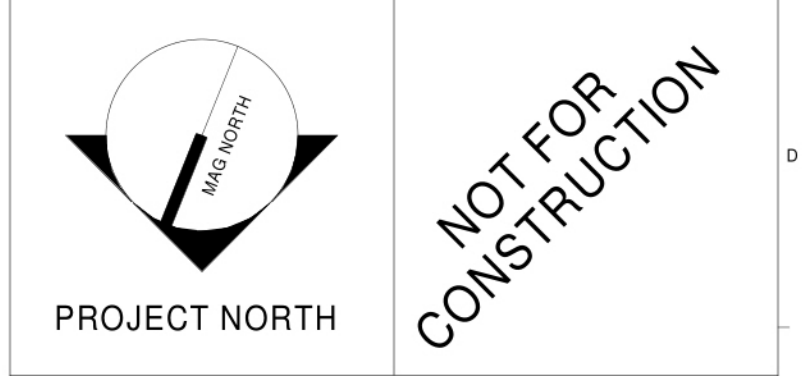
0001
09/17/2019

A

E

G

REV.	DESCRIPTION	DATE
0	75% CONSTRUCTION DOCUMENTS	17 DEC 2019



WBRC
ARCHITECTS • ENGINEERS
WWW.WBRC.AE.COM
BANGOR, MAINE 207-947-4511
PORTLAND, MAINE 207-828-4511
SAKASOTA, FLORIDA 904-556-8757

**40A MANSON LIBBY ROAD
GSA FITOUT**
PROJECT:
40 MANSON LIBBY ROAD
SCARBOROUGH, ME 04074

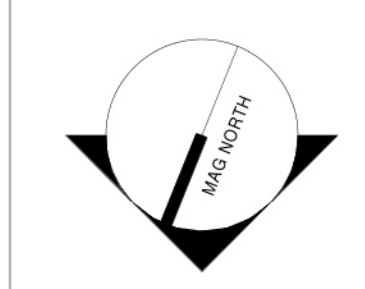
**FIRST FLOOR PLUMBING
REMOVALS PLAN**

SHEET TITLE:	
WBRC CAD FILE:	GRAPHIC SCALE:
PROJECT No: 4290.10	0'
SCALE: 1/4" = 1'-0"	1'
PROJECT MANAGER: 0001 09/17/2019	SHEET No: PD101
DRAWN BY:	
CHECKED BY:	

TECHNICAL NOTES:

- ① SPACE RESERVED FOR ELECTRICAL - NO PIPING PERMITTED.

REV.	DESCRIPTION	DATE
0	75% CONSTRUCTION DOCUMENTS	17 DEC 2019



**NOT FOR
CONSTRUCTION**

WBRC
ARCHITECTS • ENGINEERS
WWW.WBRC.AE.COM
BANGOR, MAINE 207-947-4511
PORTLAND, MAINE 207-828-4511
SARASOTA, FLORIDA 941-556-8757

**40A MANSON LIBBY ROAD
GSA FITOUT**
PROJECT:
40 MANSON LIBBY ROAD
SCARBOROUGH, ME 04074

**FIRST FLOOR PLUMBING
PLAN**

SHEET TITLE:	
WBRC CAD FILE:	GRAPHIC SCALE:
PROJECT No: 4290.10	0'
SCALE: 1/4" = 1'-0"	1'
PROJECT MANAGER: WBRC DB7ACJ	SHEET No:
DRAWN BY:	PL101
CHECKED BY:	



REV.	DESCRIPTION	DATE

NOT FOR CONSTRUCTION

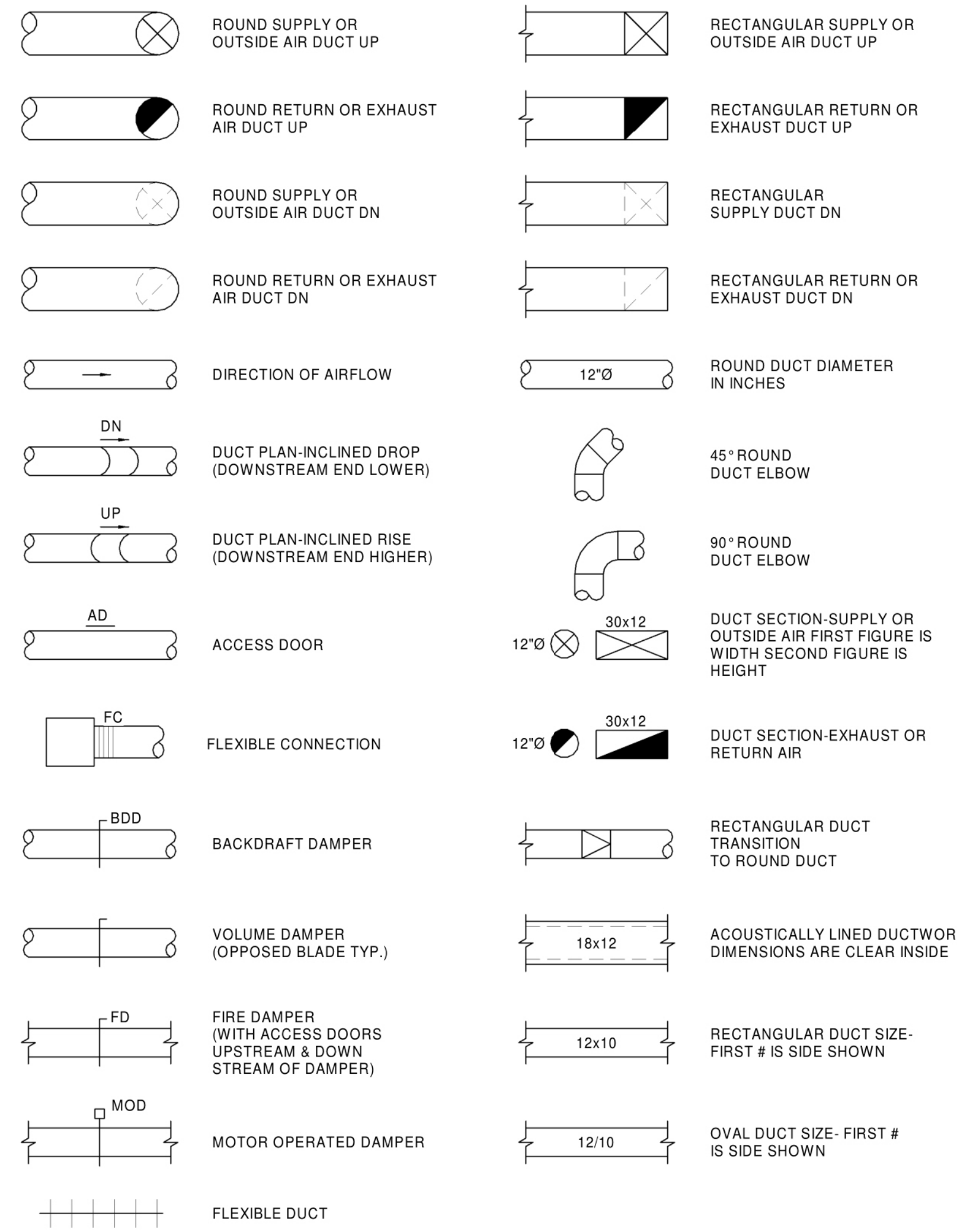
WBRC ARCHITECTS • ENGINEERS
WWW.WBRC.AE.COM
 BANGOR, MAINE 207-947-4511
 PORTLAND, MAINE 207-828-4511
 SARASOTA, FLORIDA 941-556-8757

**40A MANSON LIBBY ROAD
 GSA FITOUT**
PROJECT: 40 MANSON LIBBY ROAD
 SCARBOROUGH, ME 04074

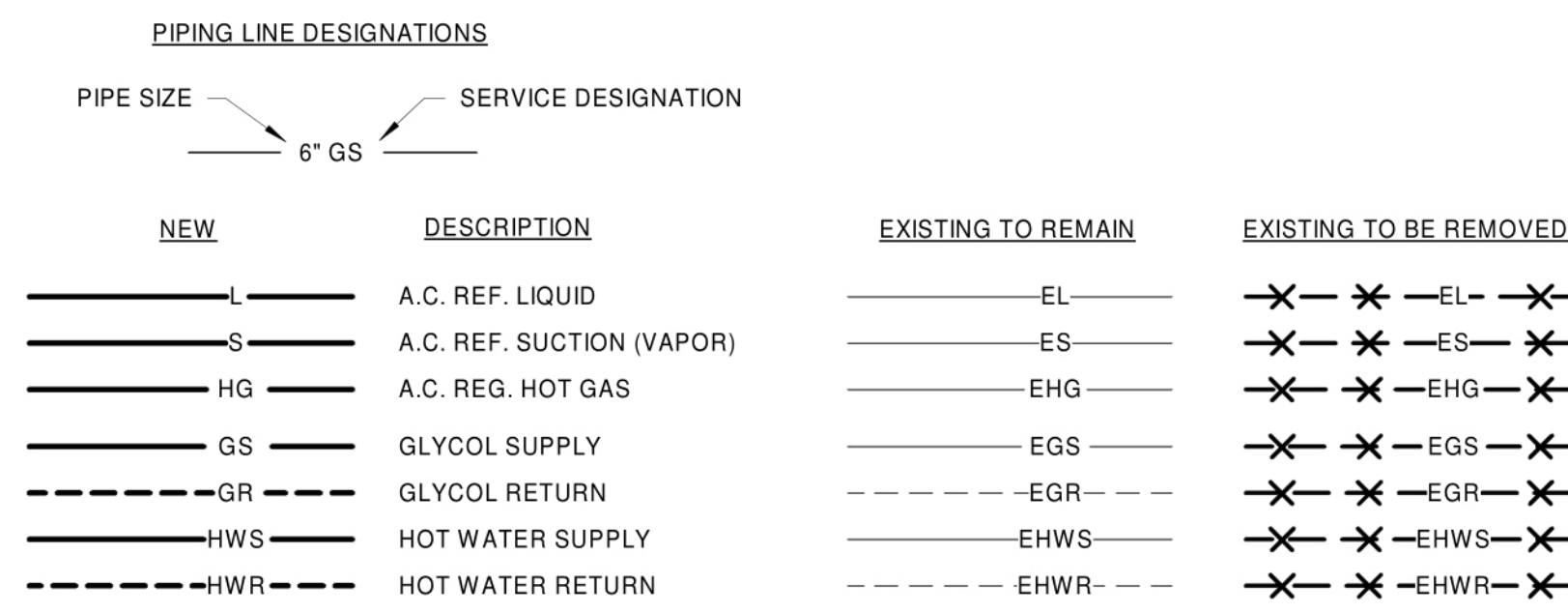
PLUMBING SCHEDULES

SHEET TITLE:
 WBRC CAD FILE: 4290.10 GRAPHIC SCALE: 0' 1" 1"
 SCALE: AS NOTED
 PROJECT MANAGER: (B) (X) (C) SHEET No. PL601
 DRAWN BY:
 CHECKED BY:

DUCTWORK STANDARDS



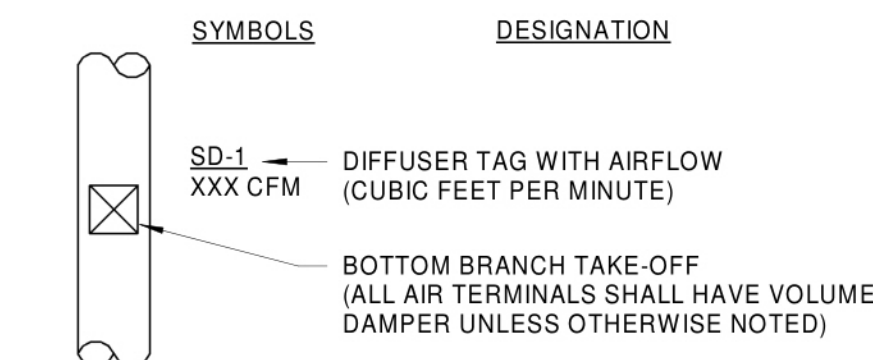
PIPING SERVICE LEGEND



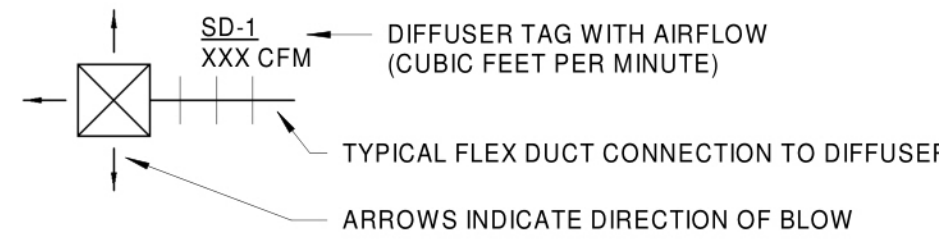
GRILLE, REGISTERS, DIFFUSERS & AIRFLOW

ABBREV.	DESIGNATION	ABBREV.	DESIGNATION
EG	EXHAUST GRILLE	EA	EXHAUST AIR
RG	RETURN GRILLE	OA	OUTDOOR AIR
SD	SUPPLY DIFFUSER	RA	RETURN AIR
LSD	LINEAR SUPPLY DIFFUSER	RLA	RELIEF AIR
SG	SUPPLY GRILLE	SA	SUPPLY AIR
TG	TRANSFER GRILLE		

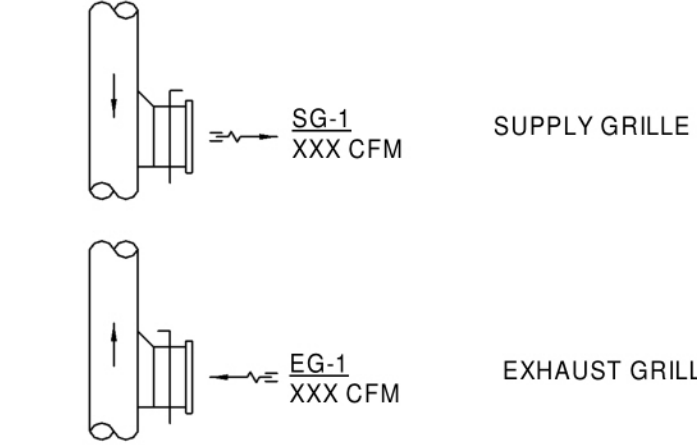
TYPICAL BOTTOM OF DUCT DIFFUSER DROP



TYPICAL CEILING DIFFUSER



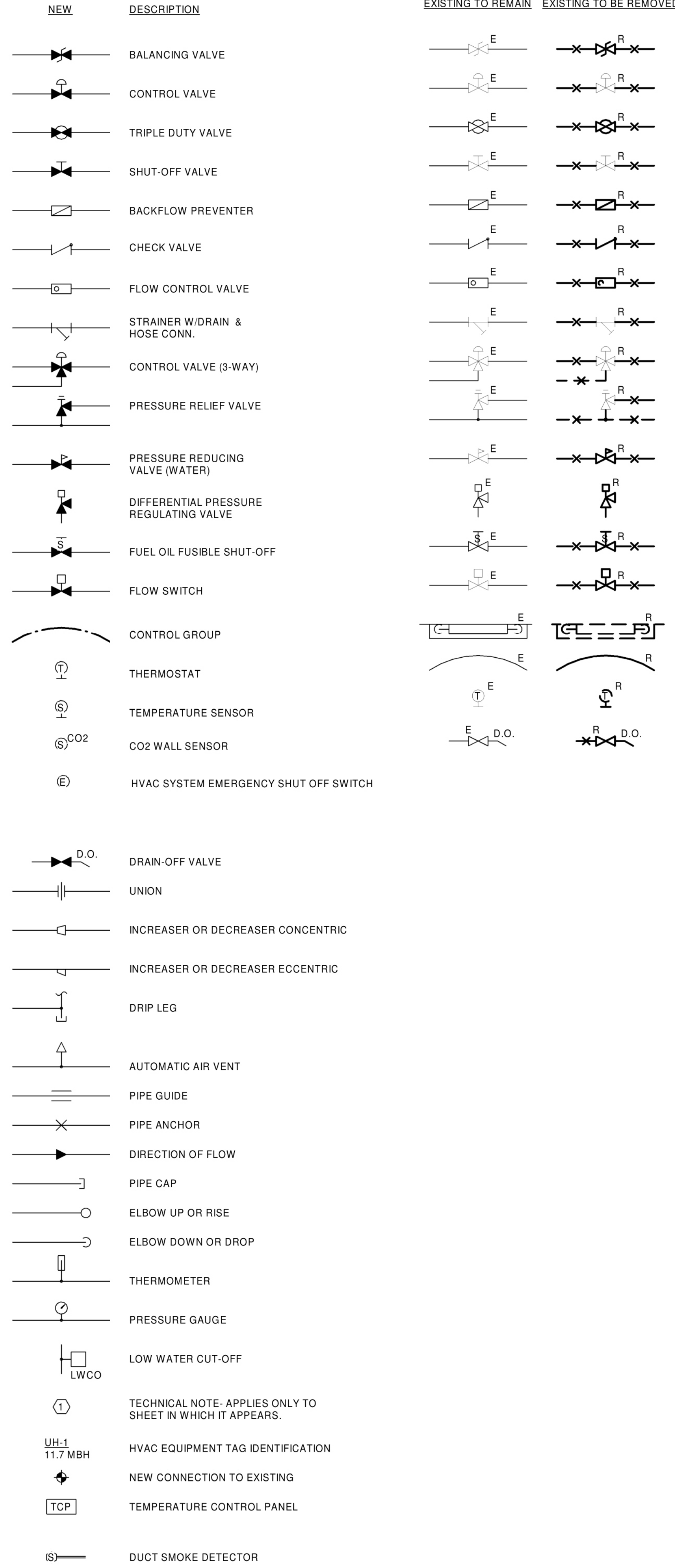
TYPICAL REGISTER/GRILLE



EQUIPMENT TAG LEGEND

TAG	DESIGNATION
ACCU-1	AIR-COOLED CONDENSING UNIT DESIGNATION
AS-1	AIR SEPARATOR DESIGNATION
B-1	BOILER DESIGNATION
BS-1	BRANCH SELECTOR BOX DESIGNATION
CF-1	CIRCULATION FAN DESIGNATION
CRAC-1	COMPUTER ROOM AIR CONDITIONING UNIT DESIGNATION
CU-1	AIR COOLED CONDENSING UNIT DESIGNATION
CUH-1	CABINET UNIT HEATER DESIGNATION
DS-1	DUCT SILENCER DESIGNATION
ERU-1	ENERGY RECOVERY UNIT DESIGNATION
EF-1	EXHAUST FAN DESIGNATION
FC-1	FLUID COOLER DESIGNATION
GUH-1	GAS UNIT HEATER DESIGNATION
HC-1	HEATING COIL DESIGNATION
HP-1	HEAT PUMP DESIGNATION
IE-1	INDOOR EVAPORATOR DESIGNATION
L-1	LOUVER DESIGNATION
MAU-1	MAKEUP AIR UNIT DESIGNATION
P-1	PUMP DESIGNATION
RF-1	RETURN FAN DESIGNATION
RTU-1	ROOFTOP UNIT DESIGNATION
SF-1	SUPPLY FAN DESIGNATION
UH-1	UNIT HEATER DESIGNATION
UV-1	UNIT VENTILATOR DESIGNATION
VAV-1	VARIABLE AIR VOLUME TERMINAL UNIT DESIGNATION
VH-1	VENTILATION HOOD DESIGNATION
XT-1	EXPANSION TANK DESIGNATION

HEATING AND VENTING SYMBOLS

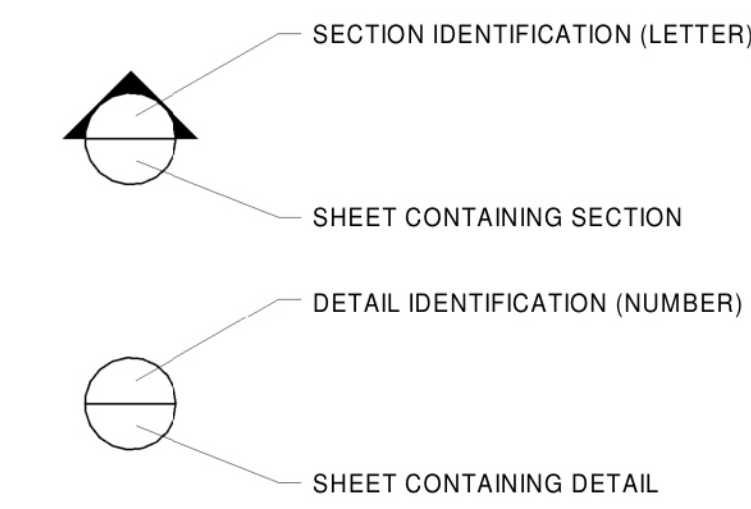


MISCELLANEOUS ABBREVIATIONS GENERAL NOTES

ABBREV.	DESIGNATION
A	ANCHOR
AD	ACCESS DOOR
AFF	ABOVE FINISHED FLOOR
APD	AIR PRESSURE DROP
AWT	AVERAGE WATER TEMPERATURE
BD	BAROMETRIC DAMPER
BDD	BACKDRAFT DAMPER
BOS	BOTTOM OF STEEL
BTU	BRITISH THERMAL UNITS
BV	BRICK VENT
CD	COOLING CONDENSATE DRAINAGE
CFM	CUBIC FEET PER MINUTE
D	DRAIN
DB	DRY BULB
EAT	ENTERING AIR TEMP.
ECC	ECCENTRIC
EL	ELEVATION
EWT	ENTERING WATER TEMPERATURE
FA	FRESH AIR
FC	FLEXIBLE CONNECTION
FD	FIRE DAMPER
FLA	FULL LOAD AMPS
GPM	GALLONS PER MINUTE
HP	HORSEPOWER
HVAC	HEATING, VENTILATING & AIR CONDITIONING
HZ	HERTZ
LAT	LEAVING AIR TEMP.
LF	LINEAL FEET
LRA	LOCKED ROTOR AMPS
LWCO	LOW WATER CUT-OFF
LWT	LEAVING WATER TEMPERATURE
MAX	MAXIMUM
MBH	THOUSAND BRITISH THERMAL UNITS PER HOUR
MD	MANUAL DAMPER
MIN	MINIMUM
MOD	MOTOR OPERATED DAMPER
MV	MANUAL VENT
N.C.	NORMALLY CLOSED
PD	PRESSURE DROP
RIC	RUN IN COVER
RPM	REVOLUTIONS PER MINUTE
SP	STATIC PRESSURE
TOS	TOP OF STEEL
TV	TURNING VANES
TYP.	TYPICAL
V	VENT
VD	VOLUME DAMPER
W/	WITH
WB	WET BULB
E	EXISTING TO REMAIN
ER	EXISTING RELOCATED
RR	REMOVE & RECOATE EXISTING
R	EXISTING TO BE REMOVED
NR	NEW TO REPLACE EXISTING IN EXISTING LOCATION

- ALL NEW SPACE THERMOSTATS SHALL BE MOUNTED 4'-0" ABOVE FINISHED FLOOR (AFF).
- EQUIPMENT, DUCTWORK AND PIPING LOCATIONS SHOWN ARE APPROXIMATE EXCEPT WHERE DIMENSIONED. EXACT LOCATIONS SHALL BE DETERMINED BY THE CONTRACTOR TO AVOID INTERFERENCES.
- FLEXIBLE CONNECTIONS SHALL BE PROVIDED BETWEEN MOTORIZED UNITS AND DUCTWORK CONNECTIONS.
- PROVIDE ACCESS DOORS IN EQUIPMENT AND DUCTWORK FOR ACCESS TO DAMPERS, MOTORS, FILTERS, FANS AND ON BOTH SIDES OF HEATING COILS.
- PIPING SHALL BE RUN AS DIRECT AS POSSIBLE, PARALLEL TO A FORMING RIGHT ANGLES TO THE LINES OF THE BUILDING, SUPPORTED FROM THE STRUCTURE, FREE FROM POCKETS & SAGS & PITCHED TO LOW POINT DRAINS.
- LOCATE ALL VALVES FOR EASY ACCESS & OPERATION. DO NOT LOCATE VALVES WESTERS BELOW HORIZONTAL.
- ALL EXTERIOR WALL PENETRATIONS SHALL BE SEALED WEATHERTIGHT.
- ALL EQUIPMENT SHALL BE INSTALLED ACCORDING TO MANUFACTURERS RECOMMENDATIONS.
- DUCTWORK SHALL BE COORDINATED TO PREVENT ANY INTERFERENCES W/ PLUMBING, PIPING, ELECTRICAL, STRUCTURAL, FIRE PROTECTION, ARCHITECTURAL AND OTHER WORK.
- ALL DUCT SIZES SHOWN ARE CLEAR INTERNAL DIMENSIONS.
- CONTRACTOR TO FIELD VERIFY ALL EXISTING DUCT SIZES, PIPE SIZES, LOUVERS, ETC. INCLUDING LOCATIONS & ARRANGEMENTS OF SAME. COORDINATE NEW WORK WITH EXISTING CONDITIONS.

SECTION & DETAIL MARKERS



0	75% CONSTRUCTION DOCUMENTS	17 DEC 2019
---	----------------------------	-------------

REV.	DESCRIPTION	DATE

WBRC
ARCHITECTS • ENGINEERS

WWW.WBRCECOM
BANGOR, MAINE 207-947-4511
PORTLAND, MAINE 207-828-4511
SAKASOTA, FLORIDA 941-556-9757

**40A MANSON LIBBY ROAD
GSA FITOUT**

40 MANSON LIBBY ROAD
SCARBOROUGH, ME 04074

MECHANICAL LEGEND

SHEET TITLE:	
WBRC CAD FILE:	
PROJECT No:	AS NOTED
SCALE:	1/4" = 1'-0"
PROJECT MANAGER:	
DRAWN BY:	
CHECKED BY:	

M-001



REV.	DESCRIPTION	DATE
0	75% CONSTRUCTION DOCUMENTS	17 DEC 2019



WBRC ARCHITECTS • ENGINEERS
 WWW.WBRC.AE.COM
 BANGOR, MAINE 207-947-4511
 PORTLAND, MAINE 207-828-4511
 SARASOTA, FLORIDA 941-556-8757

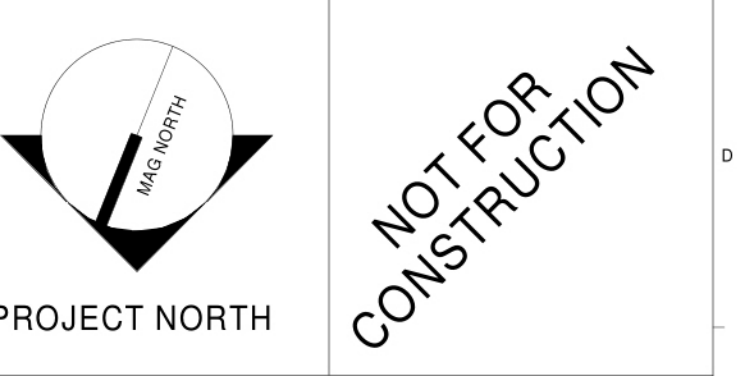
**40A MANSON LIBBY ROAD
 GSA FITOUT**
 PROJECT: 40 MANSON LIBBY ROAD
 SCARBOROUGH, ME 04074

**FIRST FLOOR MECHANICAL
 REMOVALS PLAN**

SHEET TITLE:
 WBRC CAD FILE:
 PROJECT No: **4290.10** GRAPHIC SCALE: 0' 1'
 SCALE: 1/4" = 1'-0"
 PROJECT MANAGER: (b)(6), (b)(7)(C) no. **MD101**
 DRAWN BY:
 CHECKED BY:



REV.	DESCRIPTION	DATE
0	75% CONSTRUCTION DOCUMENTS	17 DEC 2019

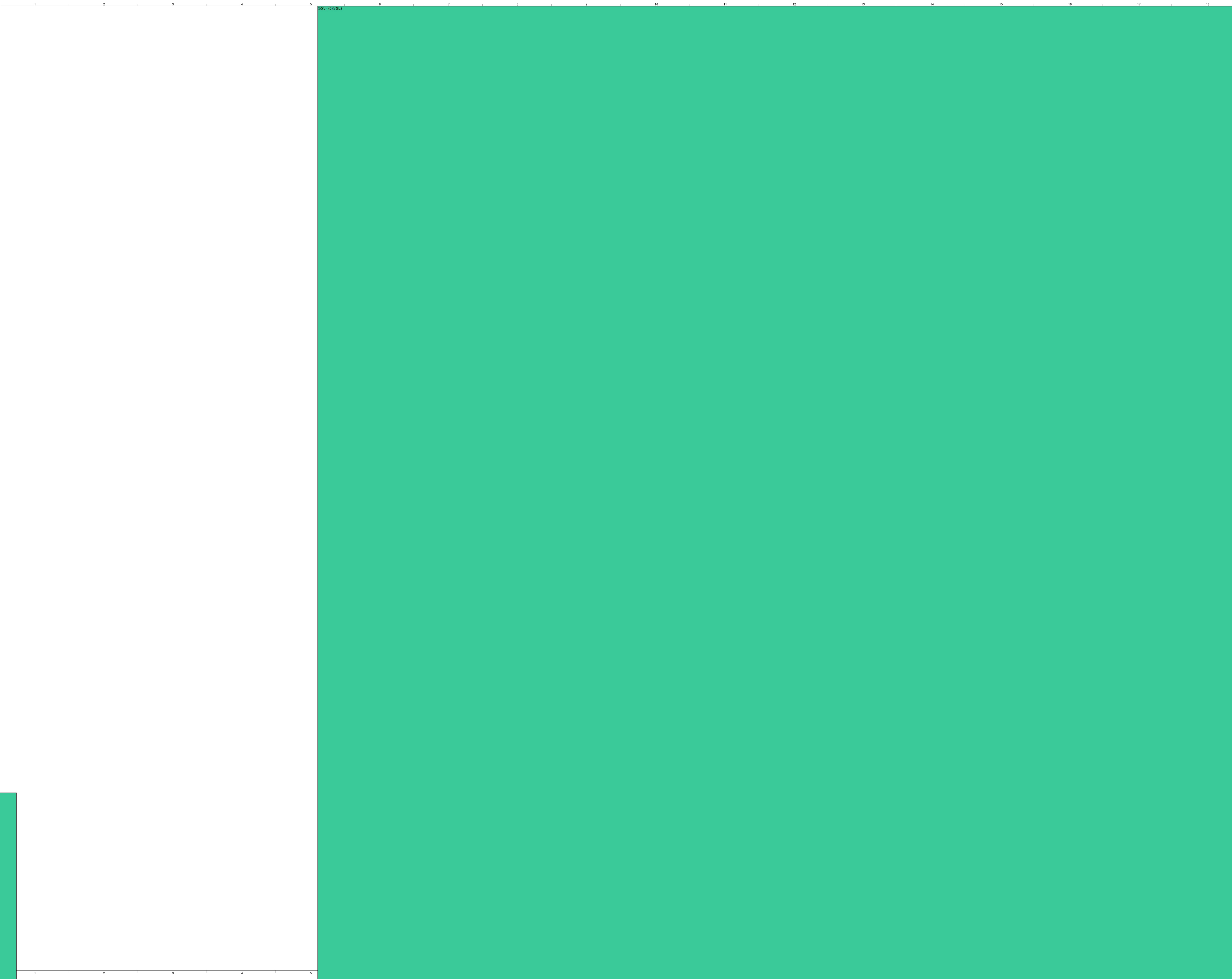


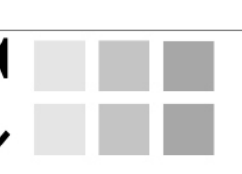
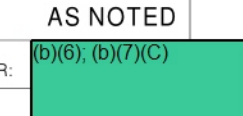

WBRC ARCHITECTS • ENGINEERS
 WWW.WBRC.AE.COM
 BANGOR, MAINE 207-947-4511
 PORTLAND, MAINE 207-828-4511
 SARASOTA, FLORIDA 941-556-8757

**40A MANSON LIBBY ROAD
 GSA FITOUT**
 PROJECT: 40 MANSON LIBBY ROAD
 SCARBOROUGH, ME 04074

**FIRST FLOOR MECHANICAL
 PLAN**

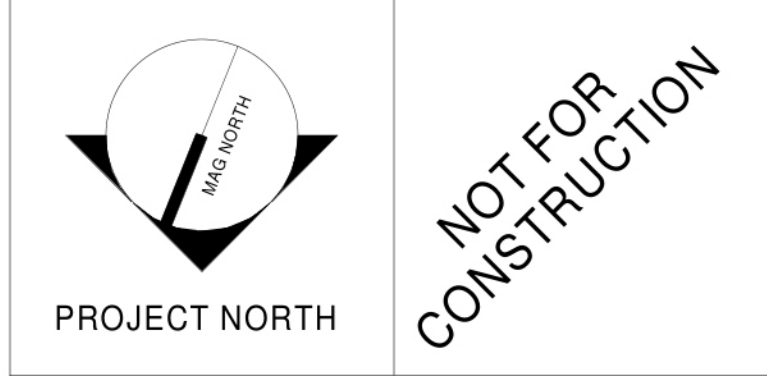
SHEET TITLE:	
WBRC CAD FILE:	
PROJECT No:	4290.10
SCALE:	GRAPHIC SCALE: 1" = 1'-0"
PROJECT MANAGER:	No. [Redacted]
DRAWN BY:	M-101
CHECKED BY:	



0	75% CONSTRUCTION DOCUMENTS	17 DEC 2019
REV.	DESCRIPTION	DATE
NOT FOR CONSTRUCTION		
WBRC  ARCHITECTS • ENGINEERS <small>WWW.WBRC.AE.COM BANGOR, MAINE 207-947-4511 PORTLAND, MAINE 207-828-4511 SARASOTA, FLORIDA 941-556-8757</small>		
40A MANSON LIBBY ROAD GSA FITOUT <small>40 MANSON LIBBY ROAD SCARBOROUGH, ME 04074</small>		
MECHANICAL DETAILS		
SHEET TITLE:		
WBRC CAD FILE:		
PROJECT No:	4290.10	GRAPHIC SCALE:
SCALE:		AS NOTED
PROJECT MANAGER:		ET No.
DRAWN BY:		M-501
CHECKED BY:		



REV.	DESCRIPTION	DATE
0	75% CONSTRUCTION DOCUMENTS	17 DEC 2019



WBRC ARCHITECTS • ENGINEERS
 WWW.WBRC.AE.COM
 BANGOR, MAINE 207-947-4511
 PORTLAND, MAINE 207-828-4511
 SARASOTA, FLORIDA 941-556-8757

**40A MANSON LIBBY ROAD
 GSA FITOUT**
 PROJECT: 40 MANSON LIBBY ROAD
 SCARBOROUGH, ME 04074

MECHANICAL SCHEDULES

SHEET TITLE:	
WBRC CAD FILE:	GRAPHIC SCALE:
PROJECT No: 4290.10	1" = 1' A
SCALE:	
PROJECT MANAGER:	SHEET No: M-601
DRAWN BY:	
CHECKED BY:	

LEGEND:

ALL DEVICES, FIXTURES, ETC. SHALL BE NEW UNLESS DESIGNATED WITH THE FOLLOWING TAGS:

- E EXISTING TO REMAIN
- ER EXISTING RELOCATED
- NR NEW TO REPLACE EXISTING IN EXISTING LOCATION
- R EXISTING TO BE REMOVED
- RR REMOVE AND RELOCATE EXISTING

EMERGENCY LIGHT

FLUORESCENT FIXTURE - UPPERCASE LETTER IS TYPE, LOWERCASE LETTER IS SWITCH CONTROL GROUP
RECTANGLES INDICATE NUMBER FIXTURES IN A ROW.

CEILING MOUNTED FIXTURE - NOTES SAME AS ABOVE

WALL MOUNTED FIXTURE - NOTES SAME AS ABOVE

WALL MOUNTED LINEAR FIXTURE - NOTES SAME AS ABOVE

TRACK LIGHTING - NOTES SAME AS ABOVE

CEILING MOUNTED EXIT SIGN - ARROW INDICATES DIRECTIVE ARROW ON SIGN

WALL MOUNTED EXIT SIGN - ARROW INDICATES DIRECTIVE ARROW ON SIGN EMERGENCY LIGHTING

BATTERY PACK WITH EMERGENCY LAMPS AS SHOWN

REMOTE EMERGENCY LAMP LIGHT FIXTURES

SPST FLUSH WALL TOGGLE SWITCH - MOUNT AT 48" A.F.F. TO CENTER - LETTER INDICATES SWITCH GROUP

THREE-WAY TOGGLE SWITCH - NOTES SAME AS SPST SWITCH ABOVE

DIMMER SWITCH - NOTES SAME AS SPST SWITCH ABOVE

LOW VOLTAGE DIMMER SWITCH - NOTES SAME AS SPST SWITCH ABOVE

FOUR-WAY TOGGLE SWITCH - NOTES SAME AS SPST SWITCH ABOVE

WALL KEY SWITCH - NOTES SAME AS ABOVE

PILOT LIGHT SWITCH - NOTES SAME AS ABOVE

VACANCY SENSOR - MANUAL ON / AUTOMATIC OFF OPERATION - NOTES SAME AS ABOVE - "ab" DENOTES DUAL RELAY SENSOR (SINGLE SWITCH W/ (2) RELAYS IS REQUIRED)

VOLUME CONTROL SWITCH - NOTES SAME AS ABOVE

LOW VOLTAGE SWITCH - NOTES SAME AS ABOVE

PROJECTION SCREEN CONTROL SWITCH

FADER STATION SWITCH

CEILING MOUNTED OCCUPANCY SENSOR - "LN" INDICATES LINE VOLTAGE

CORNER MOUNTED OCCUPANCY SENSOR

POWER PACK FOR LOW VOLTAGE LIGHTING CONTROL DEVICES

EMERGENCY LIGHTING CONTROL UNIT

PHOTO CELL

PLUGMOLD

20 AMP DUPLEX CONVENIENCE RECEPTACLE - MOUNT AT 18" A.F.F. TO CENTER UNLESS NOTED OTHERWISE
"GF" INDICATES GROUND FAULT DEVICE, "U" INDICATES MOUNTED AT 48" OR 6" ABOVE BACKSPASH OR COUNTER, WHICHEVER IS LOWER. "WP" INDICATES GROUND PROTECTED BY UPSTREAM DEVICE. "WP" INDICATES WEATHERPROOF.
"IG" INDICATES INSULATED/ISOLATED GROUND, "C" INDICATES CEILING MOUNTED, "F" INDICATES FLOOR MOUNTED, "WR" INDICATES WEATHER RESISTANT RATED, "H" INDICATED HORIZONTALLY MOUNTED, "USB" INDICATES DUPLEX RECEPTACLE WITH 2-PORT USB CHARGER

20 AMP QUADRAPLEX (DOUBLE DUPLEX) - NOTES SAME AS ABOVE

SPECIAL PURPOSE OUTLET OR EQUIPMENT CONNECTION - COORDINATE LOCATION AND TYPE OF CONNECTION WITH EQUIPMENT BEING SERVED.

JUNCTION BOX WITH COVER

MOTOR - SIZE AS INDICATED - COORDINATE W/ ACTUAL EQUIPMENT BEING SERVED

MANUAL STARTER - COORDINATE WITH EQUIPMENT BEING SERVED SINGLE THROW

FUSED DISCONNECT SWITCH - NEMA ENCLOSURE AS REQUIRED REMOTE CONTROL

MAGNETIC STARTER - COORDINATE W/ EQUIPMENT BEING SERVED

FUSED DISCONNECT SWITCH / MAGNETIC STARTER - NOTES SAME AS ABOVE

GROUND

ADA ELECTRICALLY-ASSISTED DOOR OPENER PUSHBUTTON

BRANCH CIRCUIT RUN IN CEILING OR IN WALLS

LOW VOLTAGE OR CONTROL WIRING - #12 MINIMUM OR AS NOTED

MULTI-CONDUCTOR BRANCH CIRCUIT - NUMBER OF HASHMARKS IS NUMBER OF WIRES (NOT INCLUDING GROUND WIRE) WITHOUT HASHMARKS IS TWO WIRE

HOMERUN TO CIRCUIT AND PANEL INDICATED - NUMBER OF ARROWS IS NUMBER OF PHASE WIRES - NUMBER OF WIRES AS INDICATED ABOVE

PANELBOARD NAME - # INDICATES CIRCUIT HOMERUN

PANELBOARD NAME - #, RELAY # INDICATES CIRCUIT HOMERUN VIA INDICATED RELAY

CONTINUATION OF CIRCUIT

DIRECTIVE ARROW

PANELBOARD - SEE PANELBOARD SCHEDULE(S)

COMMUNICATION WALL MOUNTED AT TYPICAL GENERAL PURPOSE ELECTRICAL OUTLET HEIGHT (18" AFF TO CENTER); REFER TO FLOOR PLANS, OUTLET CONFIGURATION DETAIL & TABLE ON E-501

COMMUNICATION WALL PHONE MOUNTED AT 48" AFF. TO CENTER. REFER TO FLOOR PLANS, OUTLET CONFIGURATION DETAIL & TABLE ON E-501.

COMMUNICATION WIFI CEILING OUTLET WITH A 20' SERVICE LOOP. REFER TO FLOOR PLANS, OUTLET CONFIGURATION DETAIL & TABLE ON E-501.

COMMUNICATION TV MOUNTED AT DISPLAY HEIGHT (72" AFF. TO CENTER). REFER TO FLOOR PLANS, OUTLET CONFIGURATION DETAIL & TABLE ON E-501.

VIDEO TELECONFERENCING / AUDIO VISUAL (VTC/AV) INFRASTRUCTURE BOX ABD CONDUIT BETWEEN BOXES. REFER TO PLANS AND ELEVATION DETAILS ON E-501.

RECESSED FLOOR OR CEILING MOUNTED BOX - POWER & COMMUNICATIONS AS SHOWN - "F" INDICATES FLOOR MOUNTED, "C" INDICATES CEILING MOUNTED - REFER TO FLOOR PLANS & OUTLET CONFIGURATION DETAIL ON E-501.

CEILING ROUND SPEAKER (SOUND OR INTERCOM SYSTEM AS SHOWN)

CEILING 2x2 LAY-IN SPEAKER (SOUND OR INTERCOM SYSTEM AS SHOWN)

WALL SPEAKER (SOUND OR INTERCOM SYSTEM AS SHOWN) - "H" INDICATES HORN TYPE

MICROPHONE

INTERCOM SYSTEM CALL STATION

INTERCOM SYSTEM CONTROL PANEL

TELEPHONE/INTERCOM SYSTEM HAND SET

EMERGENCY PULL STATION

CABLE TRAY

LADDER TRAY

FIRE ALARM SYSTEM CONTROL PANEL

FIRE ALARM ANNUNCIATOR

FIRE ALARM SYSTEM CEILING MOUNTED HEAT DETECTOR

FIRE ALARM SYSTEM CEILING MOUNTED SMOKE DETECTOR

FIRE ALARM SYSTEM CEILING MOUNTED CARBON MONOXIDE DETECTOR

FIRE ALARM SYSTEM CEILING MOUNTED COMBINATION HEAT & SMOKE DETECTOR

FIRE ALARM SYSTEM DUCT MOUNTED SMOKE DETECTOR

WALL MOUNTED FIRE ALARM SYSTEM MANUAL PULL STATION

FIRE ALARM SYSTEM WALL MOUNTED AUDIO/VISUAL DEVICE WITH VISUAL DEVICE CANDELA RATING AS NOTED

FIRE ALARM SYSTEM WALL MOUNTED AUDIO DEVICE

FIRE ALARM SYSTEM WALL MOUNTED VISUAL DEVICE ONLY - CANDELA RATING AS NOTED FIRE ALARM SYSTEM

DOOR HOLD-OPEN DEVICE CONNECTION

FIRE ALARM SYSTEM/SPRINKLER SYSTEM PRESSURE SWITCH

FIRE ALARM SYSTEM/SPRINKLER SYSTEM FLOW SWITCH

FIRE ALARM SYSTEM/SPRINKLER SYSTEM TAMPER SWITCH

SECURITY ALARM SYSTEM CONTROL PANEL

SECURITY ALARM SYSTEM CAMERA - "IP" INDICATES IP CAMERA LOCATION, ALL OTHERS SHALL BE ANALOG CAMERA, "V" INDICATES VANDAL RESISTANT, "WP" INDICATES WEATHERPROOF

LIGHT FIXTURE SCHEDULE

TYPE	DESCRIPTION	SIZE	MANUFACTURER CAT. NO.	LENS/LOUVER	LAMPS (1)	DRIVER (1)	MINIMUM EFFICACY	WATTS PER FIXTURE	VOLT.	NOTES
A	CEILING RECESSED ARCHITECTURAL TROFFER	2'X2'	LEDALITE 4122-D1-ST-L-8A-E-S-7-D		LED	0-10V DIMMING	120	26	MVOLT	
A1	CEILING RECESSED ARCHITECTURAL TROFFER	2'X2'	LEDALITE 4122-D1-ST-L-8A-D-S-7-D		LED	0-10V DIMMING	117	34	MVOLT	
B	CEILING SURFACE LINEAR STRIP	4'L	DAY-BRITE FSS-4-30L-840-UNV-LSXR10		LED		119	26	MVOLT	
B1	CEILING SURFACE LINEAR STRIP	4'L	DAY-BRITE FSS-4-40L-840-UNV		LED		133	31	MVOLT	
C	CEILING RECESSED DETENTION GRADE	1'X4'	KENALL RMCA-4-FL-SA-0-1-45L40K-DCC-DV-2/TG-WL		LED	DIMMING	59	50	MVOLT	
D	ROOM IN USE LIGHT		KENALL METMSU-MW-R-IU-DT-TR		LED				MVOLT	
F	SURFACE MOUNTED DETENTION GRADE	1'X4'	KENALL SCT-4-0-67L40K-DCC-DV-6-1		LED	DIMMING	84	67	MVOLT	
G	CEILING RECESSED DETENTION GRADE	2'X2'	KENALL RMCD-2-0-45L40K-DCC-DV-2/TG		LED	DIMMING	73	51	MVOLT	
	EXIT SIGN	--	KENALL METSW-MW-R-DT-EL	--	RED LED	--	--	1	MVOLT	REFER TO PLANS FOR QUANTITIES AND NUMBER..
	EXIT SIGN - DETENTION GRADE	--	KENALL MMEX-1-**-R-DT-EL	--	RED LED	--	--	1	MVOLT	REFER TO PLANS FOR QUANTITIES AND NUMBER..
	EMERGENCY BATTERY PACK		KENALL METELHC-**-MW-2-6.5L-DT		LED				120VAC/12VDC	HIGH IMPACT CONSTRUCTION. ** CONTRACTOR TO DETERMINE BATTERY CAPACITY, 24H OR 40H.
	EMERGENCY REMOTE HEAD		KENALL METER-MW-1-6.5L-12VAC/DC		LED				12VDC	HIGH IMPACT CONSTRUCTION.

LEGEND CONTINUED:

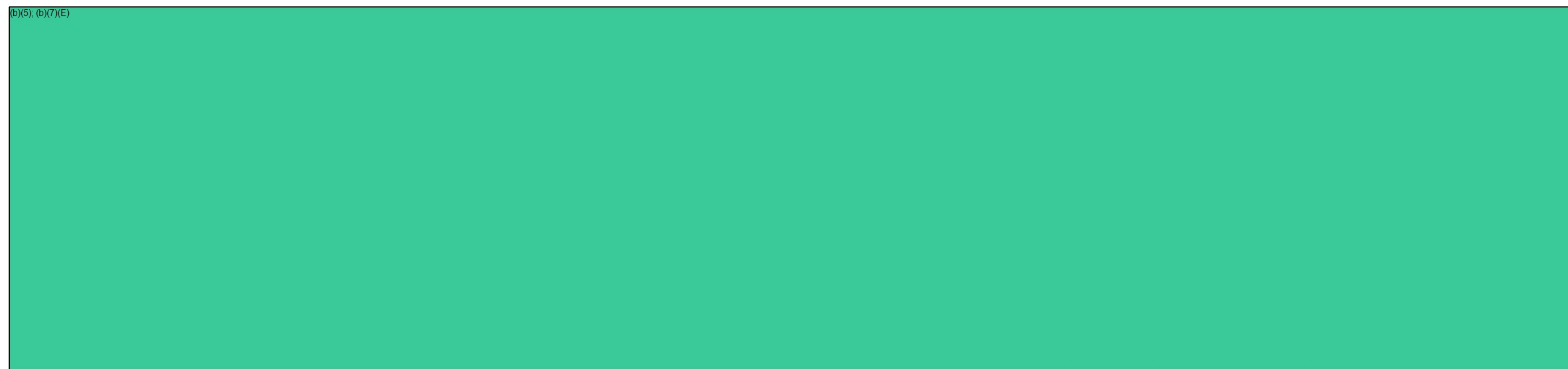
- REQUEST TO EXIT
- SECURITY ALARM SYSTEM MOTION DETECTOR
- SECURITY ALARM SYSTEM SIREN/STROBE
- ACCESS CONTROL SYSTEM CARD READER
- KEY PAD
- ACCESS CONTROL POSITION SWITCH
- ACCESS CONTROL SYSTEM ARMING STATION
- DURESS LIGHT
- DURESS BUTTON

GENERAL NOTES:

- ALL WORK SHALL BE INSTALLED IN A NEAT AND WORKMAN LIKE MANNER, RECTILINEAR TO BUILDING STRUCTURE, AND IN ACCORDANCE WITH ALL APPLICABLE CODES, INCLUDING, BUT NOT LIMITED TO NFPA 70, 90A, 101 AND DIRECTION OF AUTHORITY HAVING JURISDICTION.
- EXACT LOCATION OF MECHANICAL EQUIPMENT THAT REQUIRES ELECTRICAL CONNECTION IS SHOWN ON THE MECHANICAL PLANS.
- CONTRACTOR SHALL REVIEW ALL TRADES CONTRACT DOCUMENTS, AND FIELD VERIFY TO DETERMINE SPECIFIC MOUNTING LOCATIONS FOR ELECTRICAL EQUIPMENT AND CONDUITS.
- COORDINATE ARRANGEMENT, MOUNTING, AND SUPPORT OF ELECTRICAL CONDUIT AND EQUIPMENT TO PROVIDE FOR EASE OF DISCONNECTING THE EQUIPMENT WITH MINIMUM INTERFERENCE TO OTHER INSTALLATIONS; TO ALLOW RIGHT OF WAY FOR PIPING INSTALLED AT A REQUIRED SLOPE, AND SO CONNECTING RACEWAYS SHALL BE CLEAR OF OBSTRUCTIONS AND OF THE WORKING AND ACCESS SPACE OF OTHER EQUIPMENT.
- RUN SEPARATE NEUTRAL WIRE FOR EACH DEDICATED BRANCH CIRCUIT SHOWN ON THE PLANS.
- DEVICES SHALL NOT BE INSTALLED BACK-TO-BACK IN ADJACENT ROOMS. ADJUST LOCATIONS AS NECESSARY TO AVOID THIS CONDITION.
- PROVIDE MINIMUM 1" CONDUIT FOR COMMUNICATION OUTLETS UP TO ACCESSIBLE CEILING SPACE.

ABBREVIATIONS:

A	AMPERES	GND	GROUND
AFF	ABOVE FINISHED FLOOR	HP	HORSEPOWER, HEAT PUMP
AFG	ABOVE FINISHED GRADE	JB	JUNCTION BOX
ATS	AUTOMATIC TRANSFER SWITCH	KVA	KILO VOLT AMPS
BATT	BATTERY	KW	KILOWATT(S)
BKR	BREAKER	LTS	LIGHTING
BLDG	BUILDING	MAX	MAXIMUM
CB	CIRCUIT BREAKER	MIN	MINIMUM
CKT	CIRCUIT	N	NEW
CLG	CEILING	OC	ON CENTER
OMP	CENTRAL MAINE POWER CO.	OS/OI	OWNER SUPPLIED, OWNER INSTALLED ITEM
CT	CURRENT TRANSFORMER	PAR	PARTIAL CIRCUIT
DN	DOWN	PVC	POLYVINYL CHLORIDE
DWG	DRAWING	RECEP	RECEPTACLE
EMERG	EMERGENCY	TEL	TELEPHONE
EMT	ELECTRICAL METALLIC TUBING	TYP	TYPICAL
EQUIP	EQUIPMENT	UG	UNDERGROUND
FA	FIRE ALARM	V	VOLTS
FAA	FIRE ALARM ANNUNCIATOR	W	WATTS
FACP	FIRE ALARM CONTROL PANEL	WG	WIRE GUARD
FA-PE	FIRE ALARM SYSTEM POWER EXTENDER	WM	WIREMOLD
FIN	FINISH, FINISHED	WP	WEATHERPROOF
FLR	FLOOR		



MOUNTING HEIGHT DETAIL
NOT TO SCALE

IT IS THE INTENT OF THIS DETAIL TO CENTER ALL DEVICES (LESS WHERE SHOWN) LOCATED ABOVE/BELOW/BESIDE EACH OTHER ALONG THE SAME CENTERLINE. PROVIDE MTG. BLOCKING/SUPPORTS AS REQ'D.

0	75% CONSTRUCTION DOCUMENTS	12.17.19
REV.	DESCRIPTION	DATE

NOT FOR CONSTRUCTION

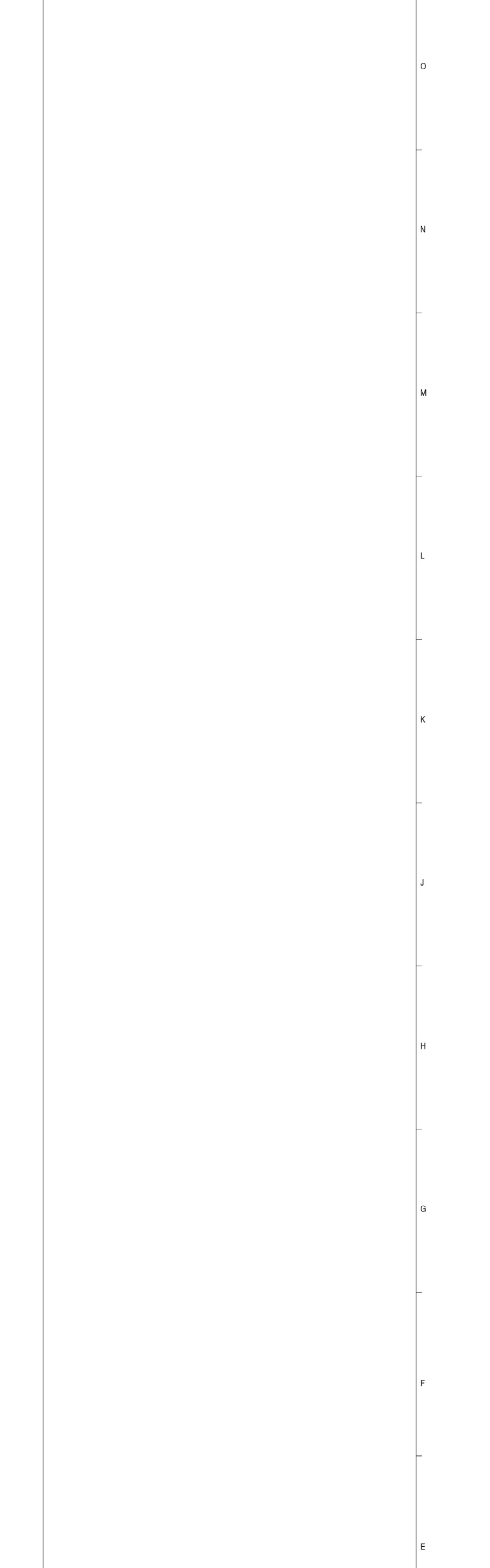
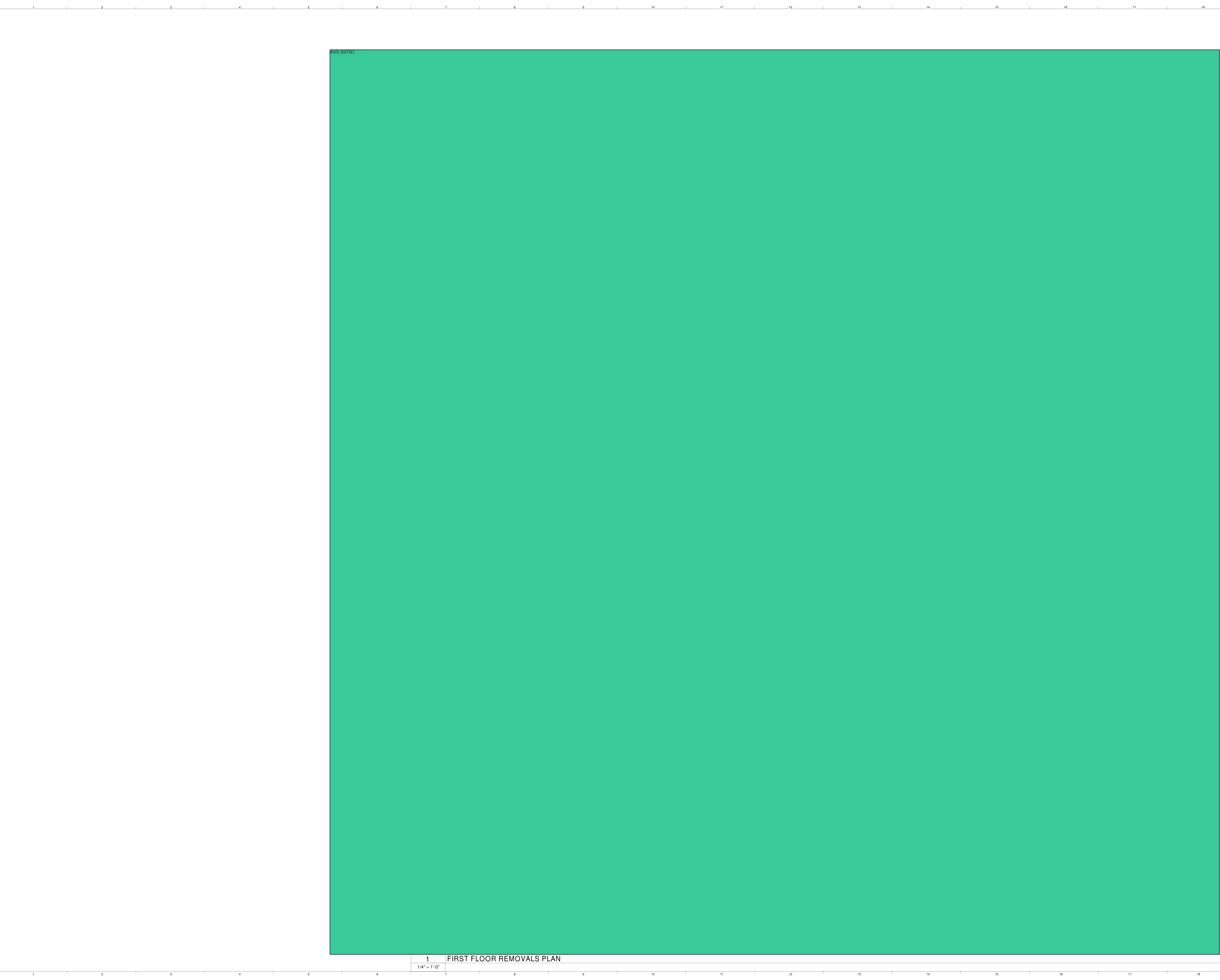
WBRC
ARCHITECTS • ENGINEERS

WWW.WBRCELECOM
BANGOR, MAINE 207-947-4511
PORTLAND, MAINE 207-825-4511
SAKASOTA, FLORIDA 904-556-9757

40A MANSON LIBBY ROAD GSA FITOUT
40 MANSON LIBBY ROAD
SCARBOROUGH, ME 04074

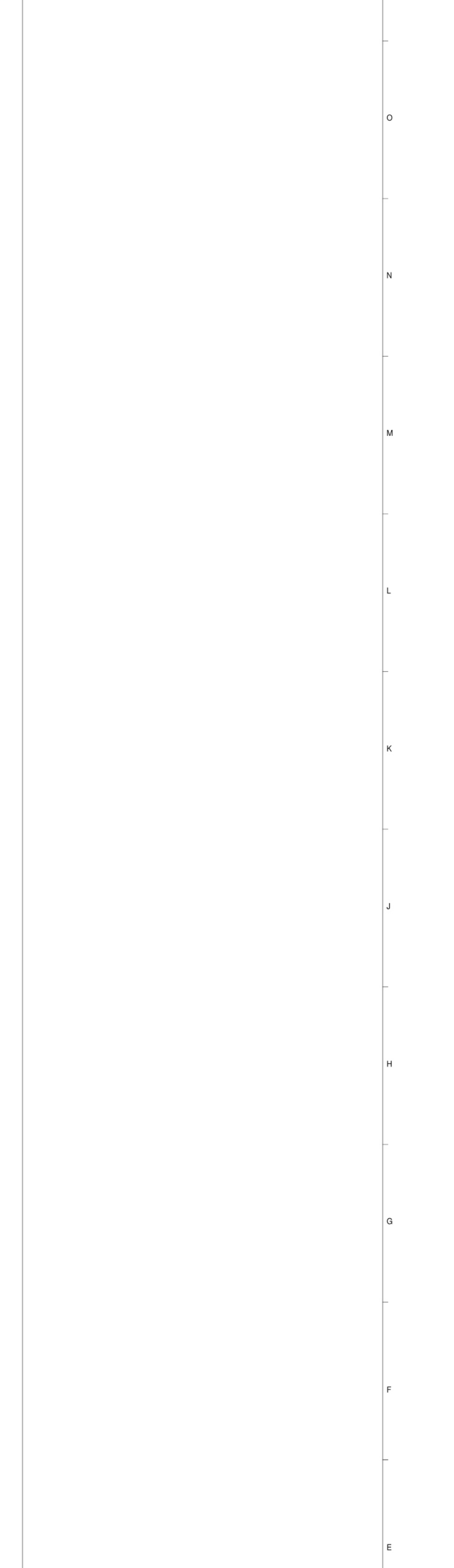
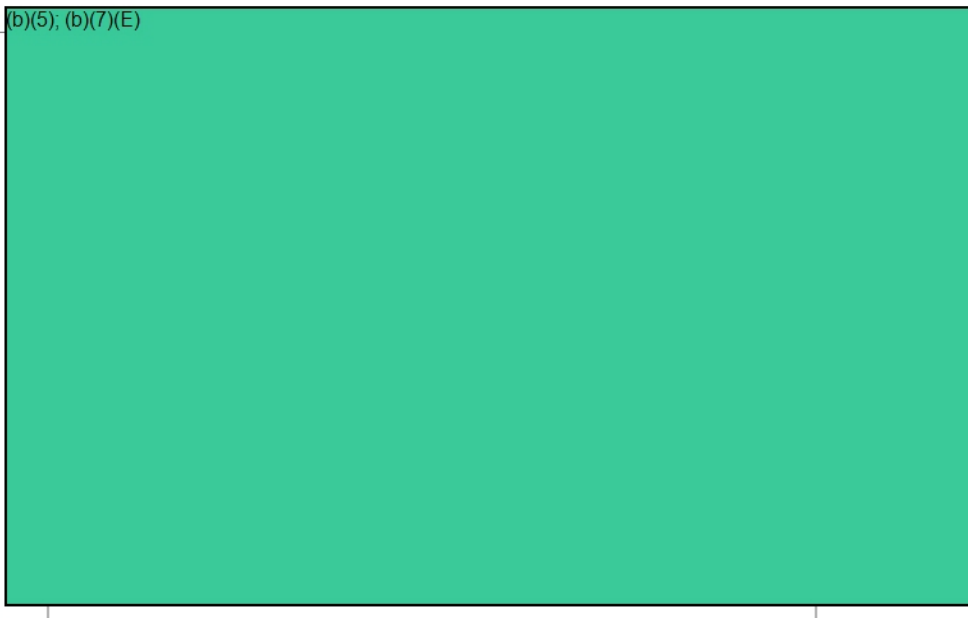
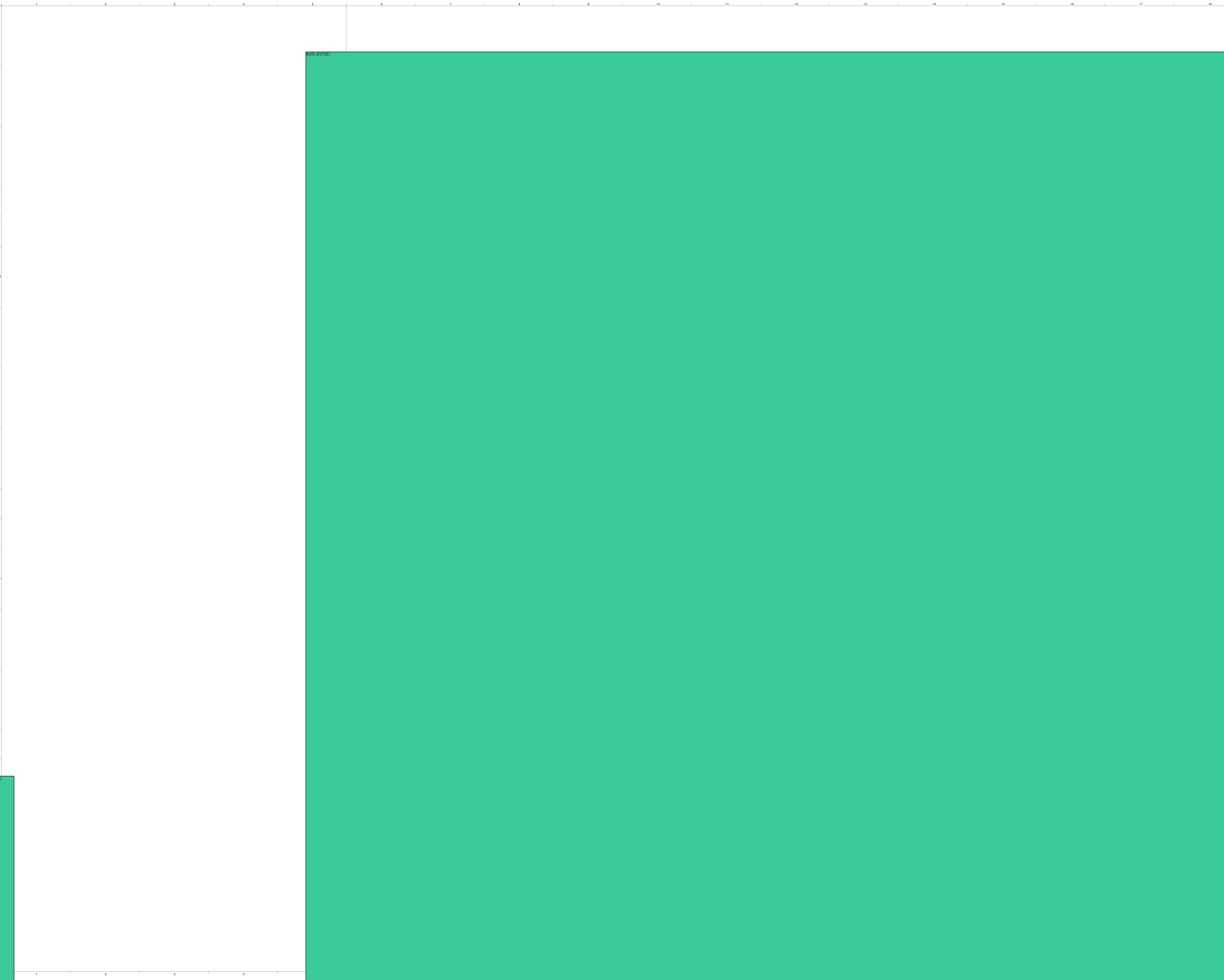
PROJECT TITLE
ELECTRICAL LEGEND AND LIGHT FIXTURE SCHEDULE

SHEET CAD FILE: 4290.00-E-001	
PROJECT No. 4290.00	GRAPHIC SCALE: 1" = 1'
SCALE: AS INDICATED	
PROJECT MANAGER: [REDACTED]	SHEET No. E-001
DRAWN BY: [REDACTED]	
CHECKED BY: [REDACTED]	

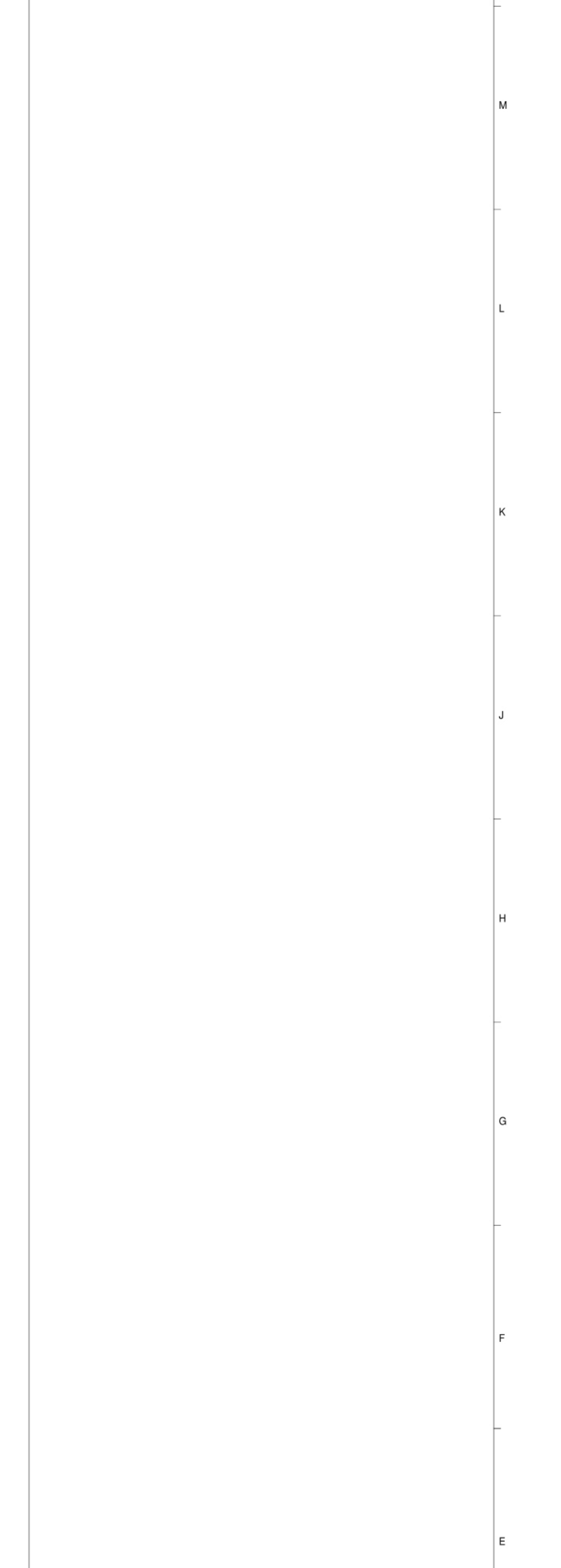
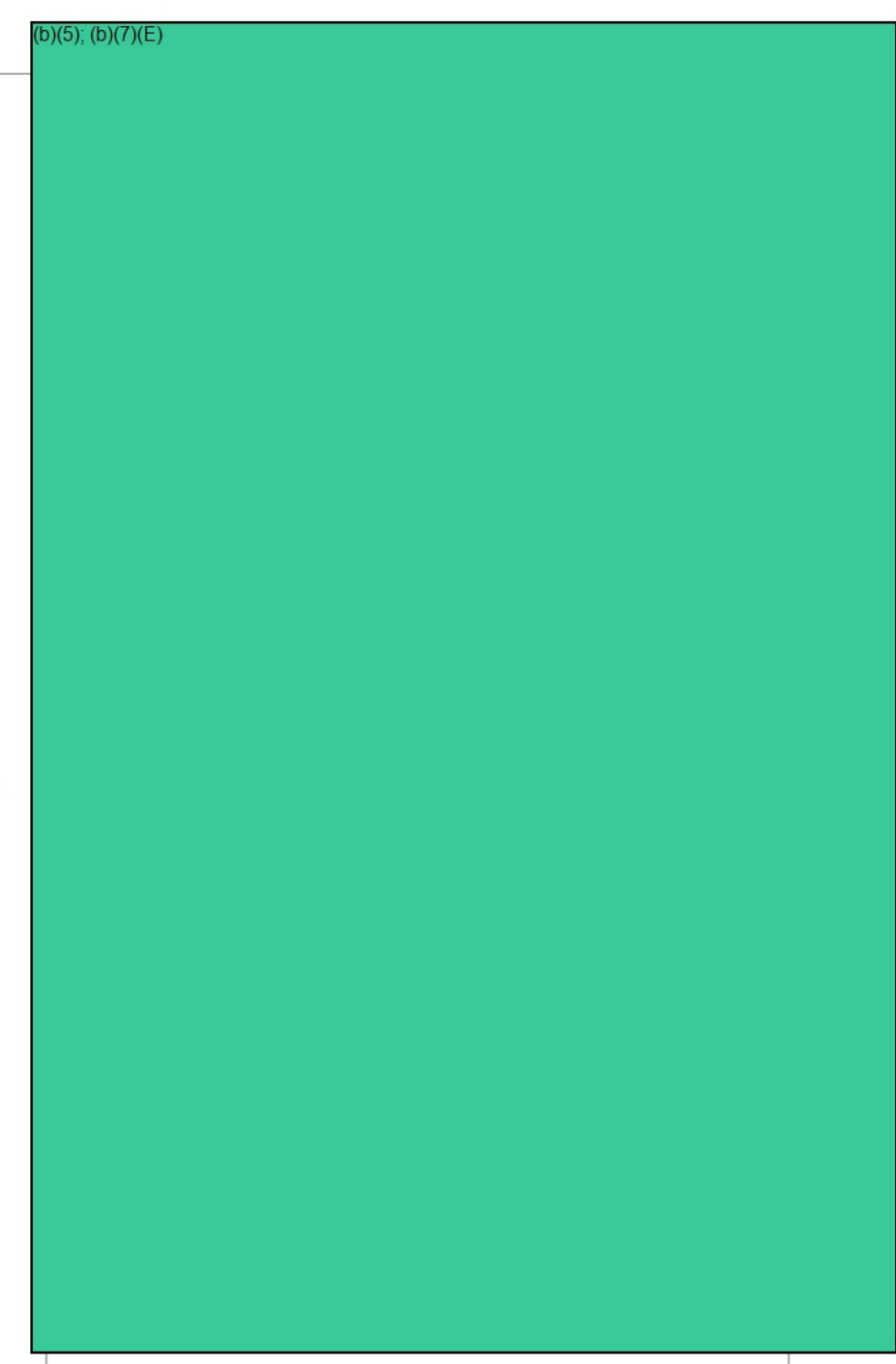
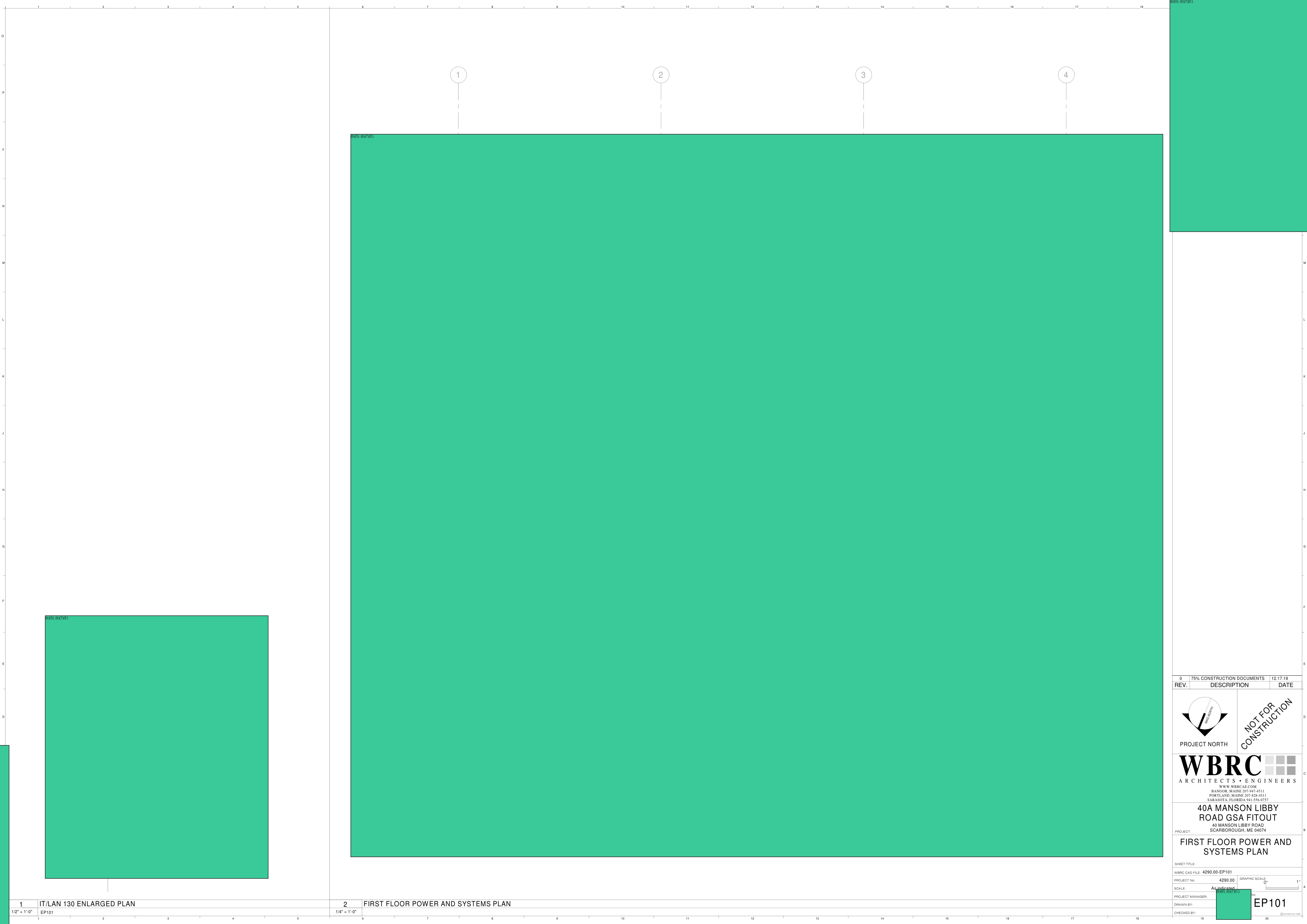


0	75% CONSTRUCTION DOCUMENTS	12.17.19
REV.	DESCRIPTION	DATE
 PROJECT NORTH		
 WBRC ARCHITECTS • ENGINEERS <small>WWW.WBRC.AE.COM BANGOR, MAINE 207-947-4511 PORTLAND, MAINE 207-828-4511 SARASOTA, FLORIDA 941-556-8757</small>		
40A MANSON LIBBY ROAD GSA FITOUT <small>40 MANSON LIBBY ROAD SCARBOROUGH, ME 04074</small>		
FIRST FLOOR ELECTRICAL REMOVALS PLAN		
SHEET TITLE:		
WBRC CAD FILE: 4290.00-ED101		
PROJECT No:	4290.00	GRAPHIC SCALE: 0' 1'
SCALE:	1/4" = 1'-0"	
PROJECT MANAGER:	0200 0207XC1	SHEET No:
DRAWN BY:		ED101
CHECKED BY:		

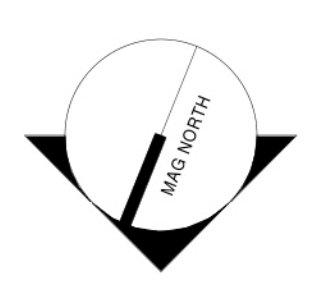

1 FIRST FLOOR REMOVALS PLAN
1/4" = 1'-0"



0	75% CONSTRUCTION DOCUMENTS	12.17.19
REV.	DESCRIPTION	DATE
<p>WBRC ARCHITECTS • ENGINEERS</p> <p>WWW.WBRC-EL.COM BANGOR, MAINE 207-947-4511 PORTLAND, MAINE 207-828-4511 SARASOTA, FLORIDA 941-556-8757</p>		
<p>40A MANSON LIBBY ROAD GSA FITOUT</p> <p>40 MANSON LIBBY ROAD SCARBOROUGH, ME 04074</p>		
<p>FIRST FLOOR LIGHTING PLAN</p>		
<p>SHEET TITLE:</p>		
<p>WBRC CAD FILE: 4290.00-EL101</p>		
PROJECT No:	4290.00	GRAPHIC SCALE: 0' 1"
SCALE:		
PROJECT MANAGER:		
DRAWN BY:		EL101
CHECKED BY:		



REV.	DESCRIPTION	DATE
0	75% CONSTRUCTION DOCUMENTS	12.17.19

 PROJECT NORTH
 NOT FOR CONSTRUCTION

WBRC
 ARCHITECTS • ENGINEERS
WWW.WBRCAE.COM
BANGOR, MAINE 207-947-4511
PORTLAND, MAINE 207-828-4511
SARASOTA, FLORIDA 941-556-8757

40A MANSON LIBBY ROAD GSA FITOUT
40 MANSON LIBBY ROAD
SCARBOROUGH, ME 04074

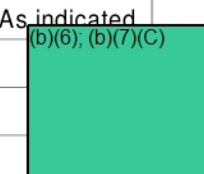
PROJECT: **FIRST FLOOR POWER AND SYSTEMS PLAN**

SHEET TITLE:

WBRC CAD FILE: 4290.00-EP101

PROJECT No: 4290.00 GRAPHIC SCALE: 0' 1"

SCALE: As indicated

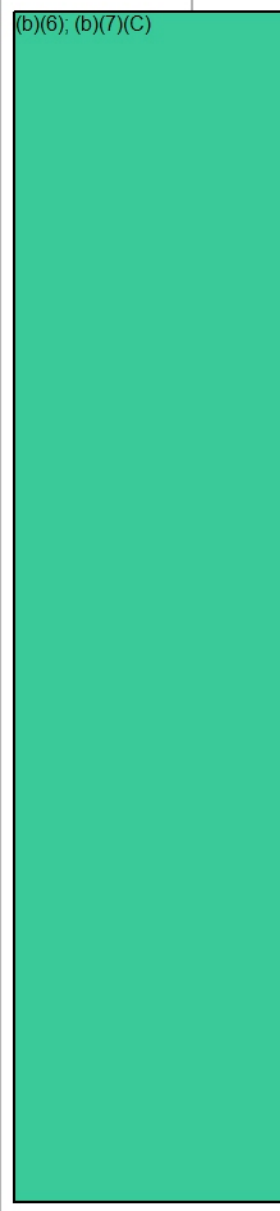
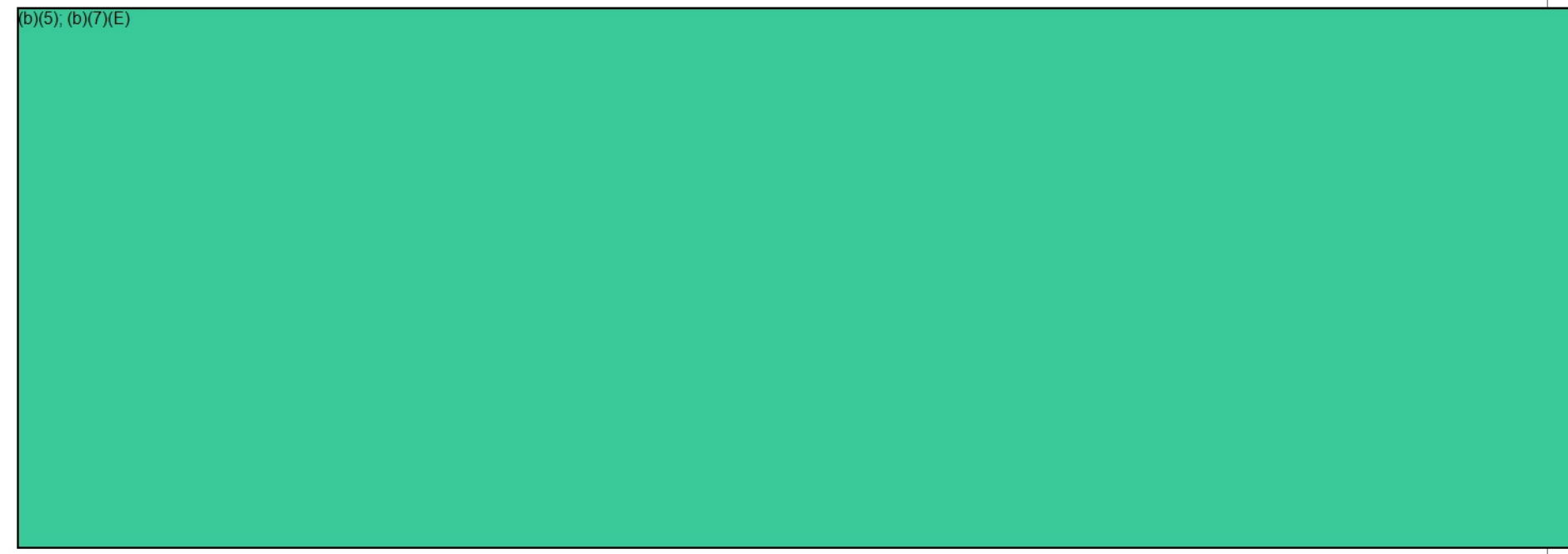
PROJECT MANAGER: 

DRAWN BY: EP101

CHECKED BY:

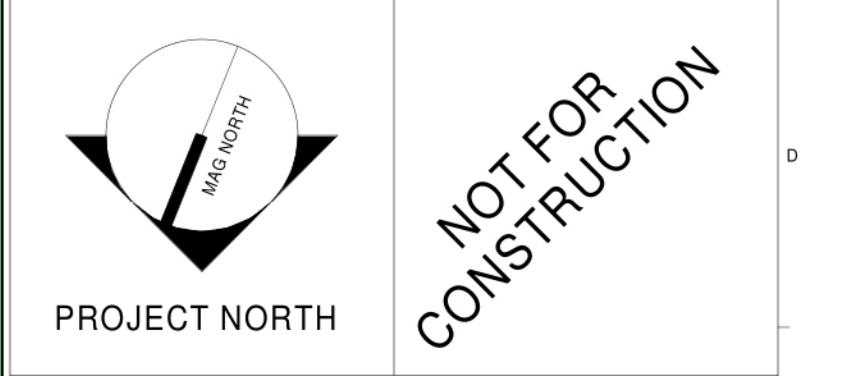
1 IT/LAN 130 ENLARGED PLAN
1/2" = 1'-0" EP101

2 FIRST FLOOR POWER AND SYSTEMS PLAN
1/4" = 1'-0"



1
1/4" = 1'

REV.	DESCRIPTION	DATE
0	75% CONSTRUCTION DOCUMENTS	12.17.19



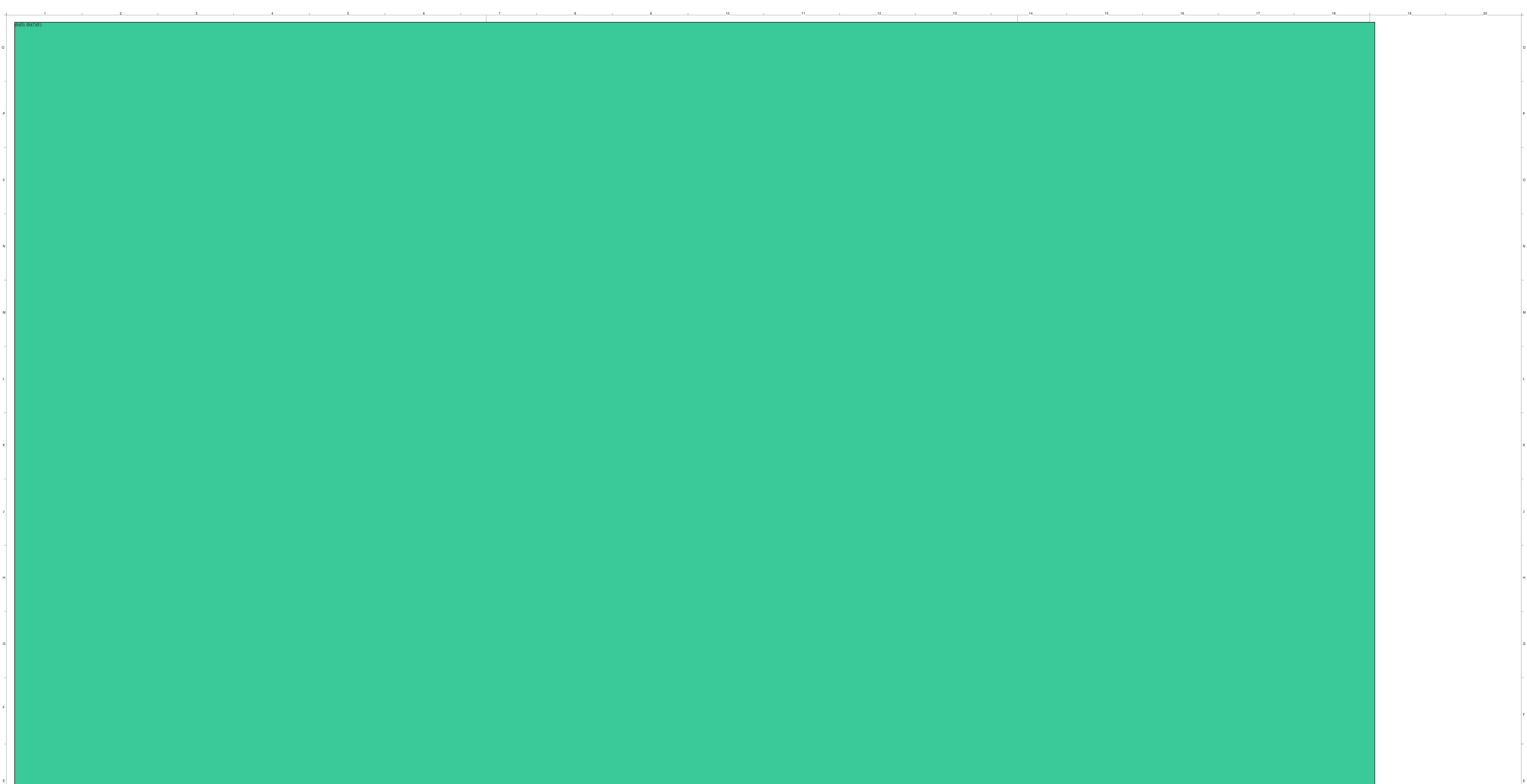
WBRC
ARCHITECTS • ENGINEERS

WWW.WBRC.AE.COM
BANGOR, MAINE 207-947-4511
PORTLAND, MAINE 207-828-4511
SARASOTA, FLORIDA 941-556-8757

40A MANSON LIBBY ROAD GSA FITOUT
40 MANSON LIBBY ROAD
SCARBOROUGH, ME 04074

FIRST FLOOR SECURITY PLAN

PROJECT No. 4290.00
GRAPHIC SCALE: 0' 1" 2"
SCALE: 1/4" = 1'
PROJECT MANAGER: [Redacted] ET No. ES101
DRAWN BY: [Redacted]
CHECKED BY: [Redacted]



REV.	DESCRIPTION	DATE
0	75% CONSTRUCTION DOCUMENTS	12.17.19

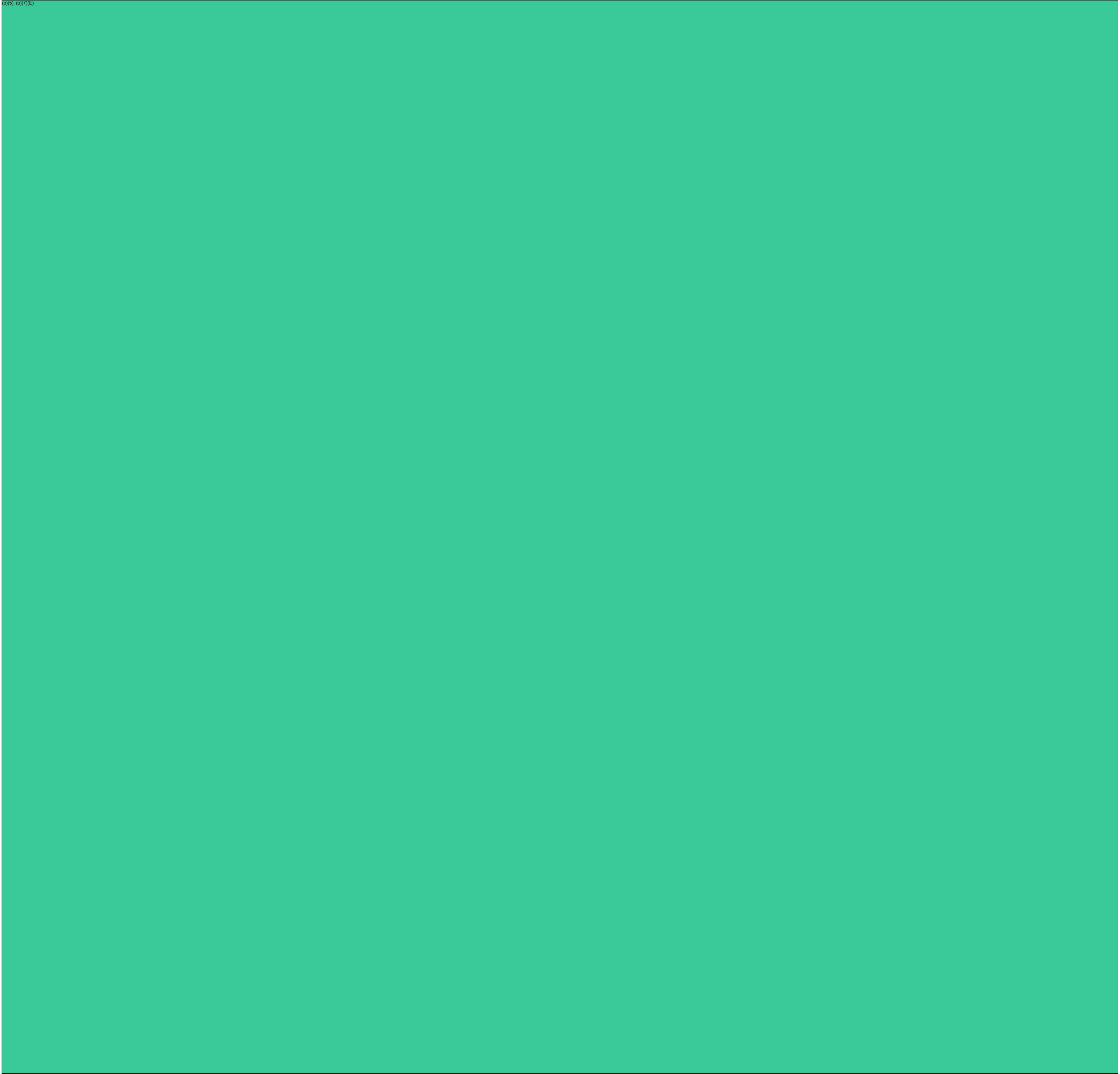
NOT FOR
CONSTRUCTION

WBRC ARCHITECTS • ENGINEERS
WWW.WBRC.AE.COM
 BANGOR, MAINE 207-947-4511
 PORTLAND, MAINE 207-829-4511
 SARASOTA, FLORIDA 941-556-8757

40A MANSON LIBBY ROAD GSA FITOUT
40 MANSON LIBBY ROAD
 SCARBOROUGH, ME 04074

ELECTRICAL DETAILS AND SCHEDULES

SHEET TITLE:
 WBRC CAD FILE: 4290.00-E-501
 PROJECT No: 4290.00 GRAPHIC SCALE: 1" = 1'-0"
 DATE: As indicated
 PROJECT MANAGER: (S) (6) (X) (C) No. E-501
 DRAWN BY:
 CHECKED BY:



From: (b)(6); (b)(7)(C)
Sent: 28 Aug 2020 14:34:10 +0000
To: (b)(6); (b)(7)(C)
Cc:
Subject: CAP Release - Monday, 8/31
Attachments: IMMIGRATION PICKUP FORM.doc

Good morning,

There is a female coming in from MCI Framingham on Monday, August 31. In 2018, she was convicted of ABDW in Suffolk Superior and sentenced to 5-6 years incarceration. Her case was admin closed and will be served an I-200/I-286 once she comes back into ICE custody. We do not have any bed space for high female CAP releases at this time. (b)(5)

(b)(5)

(b)(5); (b)(6); (b)(7)(C)

(b)(6); (b)(7)(C)

China, Custody class: High

Thank you,

(b)(6); (b)(7)(C)

Supervisory Detention and Deportation Officer
DHS/ICE/ERO
Boston Field Office

1000 District Avenue | Burlington, MA 01803 | 📞: 781-760-

(b)(6);
(b)(7)(C)

**U.S. IMMIGRATION AND CUSTOMS ENFORCEMENT
BOSTON DISTRICT**

JAIL RELEASE AND PICKUP FORM

DATE OF ACTION (8 / 26 / 20)

ATTN: SUPERVISOR, LIEUTENANT ON DUTY

ALIEN #: (b)(6); (b)(7)(C) _____
NAME: (b)(6); (b)(7)(C) _____
AKA: _____

DOB: (b)(6); (b)(7)(C)) POB: _____ Tiawan _____

INMATE #: (b)(6); (b)(7)(C) _____

RELEASE DATE: (8 / 31 / 20) (M onday)

JAIL LOCATION: MCI-FRAMINGHAM, 99 LORING DRIVE, BOX 9007, FRAMINGHAM, MA

CONTACT REP: (b)(6); (b)(7)(C) Commitment Manager or (b)(6); (b)(7)(C) Records Supervisor
PHONE #: 508-532-(b)(6); (b)(7)(C)

ALERT STATUS

1) VIOLENCE	YES	NO	UNK
2) ESCAPE RISK	YES	NO	UNK
3) MEDICAL RISK	YES	NO	UNK
4) OTHER:	_____		

COMMENTS: _____

FAX THIS FORM WITH RELEASE INFO TO: U.S.I.C.E BOSTON SPC
FAX # (617) 989-6635

PHONE # IF NEEDED IS (617) 989-(b)(6);
(b)(7)(C)

From: (b)(6); (b)(7)(C)
Sent: 30 Nov 2020 23:28:03 +0000
To: (b)(6); (b)(7)(C)
Subject: COVID negative test result.
Attachments: [redacted]1-27.pdf

See attached.

Sent with BlackBerry Work
(www.blackberry.com)

From: (b)(6); (b)(7)(C)
Date: Sunday, Nov 29, 2020, 11:23 AM
To: (b)(6); (b)(7)(C)
Cc: [redacted]
(b)(6); (b)(7)(C)
Subject: 24 hour notification for facility transfer and awaiting acknowledgement and acceptance of the inmate; (b)(6); (b)(7)(C)

Good morning,

This is a 24 hour notification for facility transfer. ICE is awaiting acknowledgement and acceptance response from Cumberland County Jail for this below inmate. Subject has been tested for COVID on 11/27/2020 and has been in quarantined since 11/27/2020 for the purpose of transfer/release from Massachusetts Correctional Institute Shirley. His results came back "Negative". Subject will be scheduled to be transported to Cumberland County Jail tomorrow Monday on 11/30/2020 as soon as acknowledgement/acceptance is received. Subject does not show any signs/symptoms of COVID.

(b)(6); (b)(7)(C)
DOB: (b)(6); (b)(7)(C)
COC: Dominican Republic
Classification: High
No gangs affiliation known.
Subject shows no signs/symptoms of COVID. Subject claimed to be in good health.

Thank you,

(b)(6); (b)(7)(C)
(A)SDDO/Intake/processing/bonds/property
Boston Field Office
Enforcement and Removal Operations
Immigration & Customs Enforcement
781-853- (b)(6); (b)(7)(C)

~~Warning: This document is UNCLASSIFIED//FOR OFFICIAL USE ONLY (U//FOUO) Law Enforcement Sensitive. It contains information that may be exempt from public release under the Freedom of Information Act (5 U.S.C. 552). It is to be controlled, stored, handled~~

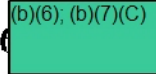
~~transmitted, distributed, and disposed of in accordance with DHS policy relating to FOUO information and is not to be released to the public or other personnel who do not have a valid "need to know" without prior approval of an authorized DHS official. No portion of this report should be furnished to the media, either in written or verbal form.~~

Tufts Medical
Center**FAX TRANSMISSION COVER PAGE**

Date : 11/28/20

Number of Pages Including This Transmittal Page: 2

TO: Fax Number: 9,1,8003157273
Company: 4996 BRIDGEWATER
Person: 4996 BRIDGEWATER

FROM: Fax Number: (617) 636-7128
Phone Number: (617) 636-
Company: TUFTS MEDICAL CENTER

Confidentiality Notice:

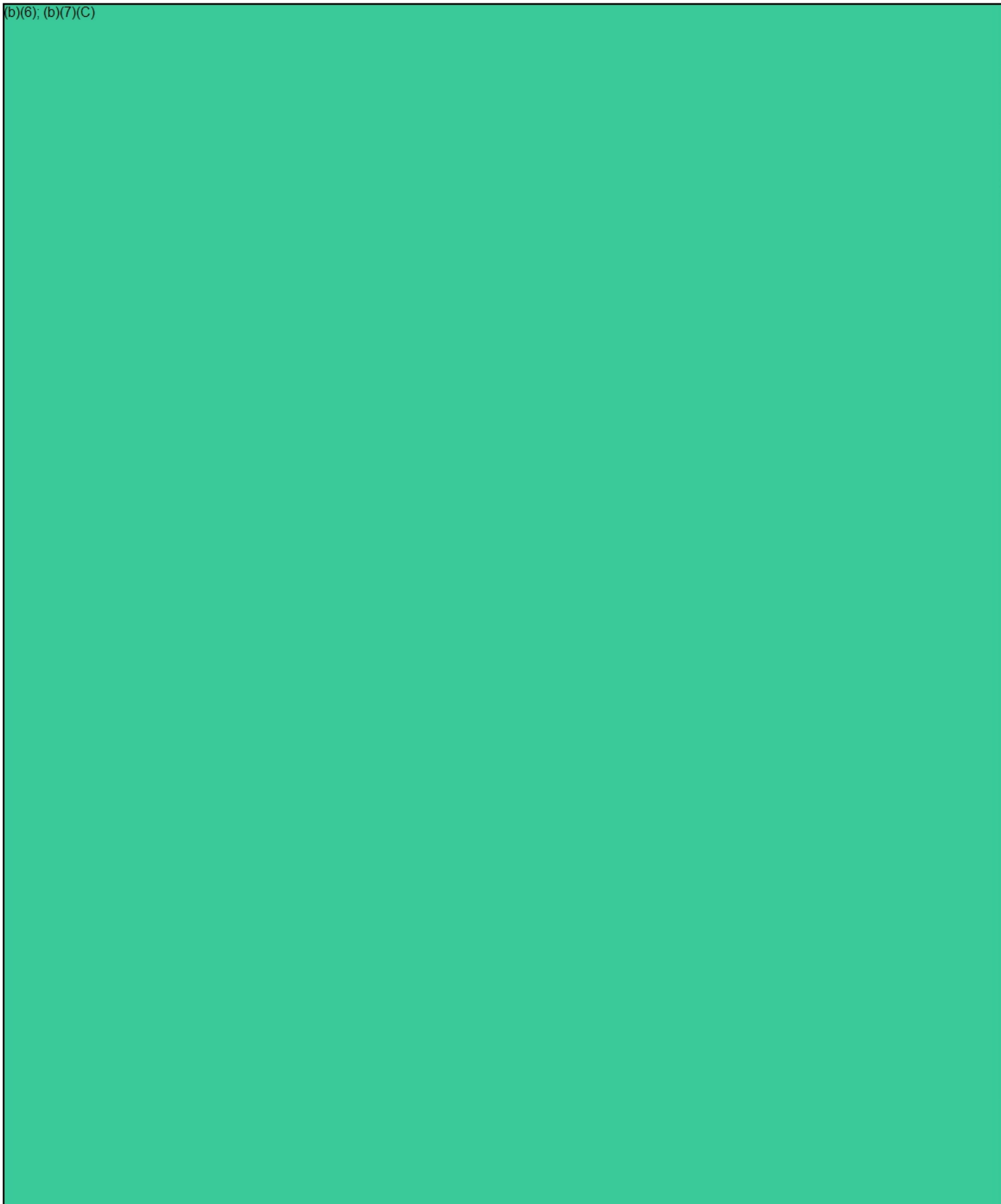
The information in this fax may have been disclosed to you from records with confidentiality protected by federal and state laws. Federal regulations and state laws prohibit you from making further disclosure of such information without the specific written consent of the person to whom the information pertains or as otherwise permitted by such regulations. A general authorization for the release of medical or other information is NOT sufficient for this purpose.

*If the reader of this information is not the intended recipient, you are hereby notified that any use, dissemination, distribution, or reproduction of this information is strictly prohibited. If you have received this information in error, please immediately notify the sender by telephone and return this facsimile to the following address via U.S. Postal Service.
Thank you.*

RETURNED FAX**TUFTS MEDICAL CENTER****800 Washington Street, Boston MA 02111**

Tufts Medical Center

(b)(6), (b)(7)(C)



From: (b)(6); (b)(7)(C)
Sent: 22 Jun 2020 16:16:20 +0000
To: (b)(6); (b)(7)(C)
Cc: (b)(6); (b)(7)(C)
Subject: FW: (b)(6); (b)(7)(C)
Attachments: Medical Summary blank.pdf

Good afternoon CCJ Intake,

We have the following female ICE detainee arriving at CCJ later today:

(b)(6); (b)(7)(C)
DOB (b)(6); (b)(7)(C)
Citizen of the D.R.

We anticipate this being a short hold time for her, and will have a transport crew picking her up in the AM. Please have medical complete the usual medical summary, with instructions **highlighted** below. Any money or property that comes in with the alien should be ready to go as she will be B&B. We will update Intake when we have the ETA for CCJ, and as well for the departure time tomorrow.

Thank you,

(b)(6); (b)(7)(C)
SDDO
ICE ERO Portland, ME Sub-Office
176 Gannett Drive
South Portland, ME 04106

Main Office Phone#: 207-780-(b)(6); (b)(7)(C)
Desk Phone#: 207-808-(b)(6); (b)(7)(C)
Cell Phone#: 207-252-(b)(6); (b)(7)(C)
Fax#: 207-780-3216

~~Warning: This document is UNCLASSIFIED//FOR OFFICIAL USE ONLY (U//FOUO). It contains information that may be exempt from public release under the Freedom of Information Act (5 U.S.C. 552). It is to be controlled, stored, handled, transmitted, distributed, and disposed of in accordance with DHS policy relating to FOUO information and is not to be released to the public or other personnel who do not have a valid "need-to-know" without prior approval of an authorized DHS official. No portion of this report should be furnished to the media, either in written or verbal form.~~

From: (b)(6); (b)(7)(C)
Sent: Monday, June 22, 2020 8:55 AM

To: (b)(6); (b)(7)(C)

(b)(6); (b)(7)(C)

Subject: RE: A200 533 495 - Yoelly Rosalis CARMENATTY

I included a blank medical summary. (b)(5)

(b)(5)

In the TB clearance/PPD section, Cumberland can just notate "in custody less than 72 hours." All medications should be listed, questions answered and temperature marked down.

From: (b)(6); (b)(7)(C)
Sent: 18 Dec 2020 23:36:28 +0000
To: (b)(6); (b)(7)(C)
Subject: FW: CCJ-COVID Update

Fyi

(b)(6); (b)(7)(C)

Supervisory Detention & Deportation Officer
Boston Field Office, Portland, ME Sub-office
Enforcement and Removal Operations
U.S. Immigration and Customs Enforcement
(Office) [207-780-](tel:207-780-)(b)(6); (b)(7)(C)

Sent with BlackBerry Work
(www.blackberry.com)

From: (b)(6); (b)(7)(C)
Date: Friday, Dec 18, 2020, 6:04 PM
To: (b)(6); (b)(7)(C)

(b)(6); (b)(7)(C)

Cc: (b)(6); (b)(7)(C)

(b)(6); (b)(7)(C)

Subject: CCJ-COVID Update

CAUTION: This email originated from outside of DHS. DO NOT click links or open attachments unless you recognize and/or trust the sender. Contact [ICE SOC SPAM](#) with questions or concerns.

Yesterday, 12/17 we began the retesting of Staff who were deemed in close contact with those Officers who have tested positive. One employee tested positive yesterday, they were asymptomatic, we conducted another 42 staff tests, all negative and we have 2 more employees left to do at this writing (will be done by Monday).

The CDC requires 2 sets of testing that are negative, as a result of yesterday's employee positive, there will be a third round of testing done of Staff on Wednesday 12/23. This testing will be the PCR test (Swab goes to the State lab), which means results probably will not be back until after Christmas?

Medical will begin testing (Abbott Rapid IDNOW) Inmates this weekend and continue until finished (probably Monday) who have been identified as close contact with the Officer's testing positive, there are 52 Inmates to be tested.

Inmates will remain in the Lockdown that Captain (b)(6), (b)(7)(C) has put out until the second round of Inmate testing is completed. Should that round remain negative, will be able to open back up.

We will continue NOT to take any new County Boarders or Transfers from the DOC (CC sentenced Inmates, they will have to hold until we are cleared), CC Arrests in other Counties (WOA's) who cannot make bail will have to be arraigned at that facility (virtual) and extraditions remain on the "not happening" list.

Extra tidbit: Many have been asking about the COVID vaccines and where Staff (and Inmates) are on the list? We asked that today during our meeting with the CDC/DOC and the best answer we got is that it's being worked on but they do not have any answers at this time. I would offer that they are coming, just not sure when nor do I know about questions like: "mandatory, opt out options, etc.".

Thank you,

(b)(6), (b)(7)(C)

Captain-Corrections

Cumberland County Sheriff's Office

50 County Way

Portland, Maine 04102

Direct: 207-245

(b)(6),
(b)(7)(C)



Notice: Under Maine law, documents - including e-mails - in the possession of public officials or employees about government business may be classified as public records. There are very few exceptions. As a result, please be advised that what is written in an e-mail could be released to the public and/or the media if requested.

From: (b)(6); (b)(7)(C)
Sent: 30 Sep 2020 17:41:09 +0000
To: (b)(6); (b)(7)(C)
Subject: FW: COVID-CCJ
Attachments: (b)(6); (b)(7)(C) Timeline Letterhead.pdf

No contact found.

Please handle as confidential per CCJ request.

(b)(6); (b)(7)(C)
SDDO
ICE ERO Portland, ME Sub-Office
[176 Gannett Drive](#)
[South Portland, ME 04106](#)

Main Office Phone#: [207-780-](#)(b)(6); (b)(7)(C)
Desk Phone#: [207-808-](#)(b)(6); (b)(7)(C)
Cell Phone#: [207-252-](#)(b)(6); (b)(7)(C)
Fax#: [207-780-3216](#)

~~Warning: This document is UNCLASSIFIED//FOR OFFICIAL USE ONLY (U//FOUO). It contains information that may be exempt from public release under the Freedom of Information Act (5 U.S.C. 552). It is to be controlled, stored, handled, transmitted, distributed, and disposed of in accordance with DHS policy relating to FOUO information and is not to be released to the public or other personnel who do not have a valid "need-to-know" without prior approval of an authorized DHS official. No portion of this report should be furnished to the media, either in written or verbal form.~~

Sent with BlackBerry Work
(www.blackberry.com)

From: (b)(6); (b)(7)(C)
Date: Wednesday, Sep 30, 2020, 1:39 PM
To: (b)(6); (b)(7)(C)
Subject: Re: COVID-CCJ

CAUTION: This email originated from outside of DHS. DO NOT click links or open attachments unless you recognize and/or trust the sender. Contact [ICE SOC SPAM](#) with questions or concerns.

Already done, there was none (I've attached the tracing report, please handle as confidential).

Thanks,

(b)(6); (b)(7)(C)

Captain-Corrections
Cumberland County Sheriff's Office
50 County Way
Portland, Maine 04102
Direct: 207-245-(b)(6); (b)(7)(C)

On Wed, Sep 30, 2020 at 1:35 PM (b)(6); (b)(7)(C) wrote:
Can you please conduct contact tracing to see if our ICE detainees transferred on 9/29 out of CCJ had any contact?

(b)(6); (b)(7)(C)

(b)(6); (b)(7)(C) SDDO
ICE ERO Portland, ME Sub-Office
176 Gannett Drive
South Portland, ME 04106

Main Office Phone#: [\(b\)\(6\); \(b\)\(7\)\(C\)">207-780-\(b\)\(6\); \(b\)\(7\)\(C\)](tel:207-780-<span style=)
Desk Phone#: [\(b\)\(6\); \(b\)\(7\)\(C\)">207-808-\(b\)\(6\); \(b\)\(7\)\(C\)](tel:207-808-<span style=)
Cell Phone#: [\(b\)\(6\); \(b\)\(7\)\(C\)">207-252-\(b\)\(6\); \(b\)\(7\)\(C\)](tel:207-252-<span style=)
Fax#: [207-780-3216](tel:207-780-3216)

~~Warning: This document is UNCLASSIFIED//FOR OFFICIAL USE ONLY (U//FOUO). It contains information that may be exempt from public release under the Freedom of Information Act (5 U.S.C. 552). It is to be controlled, stored, handled, transmitted, distributed, and disposed of in accordance with DHS policy relating to FOUO information and is not to be released to the public or other personnel who do not have a valid "need-to-know" without prior approval of an authorized DHS official. No portion of this report should be furnished to the media, either in written or verbal form.~~

Sent with BlackBerry Work
(www.blackberry.com)

From: (b)(6); (b)(7)(C)

Date: Wednesday, Sep 30, 2020, 1:27 PM

To: (b)(6), (b)(7)(C)

(b)(6), (b)(7)(C)

Subject: COVID-CCJ

CAUTION: This email originated from outside of DHS. DO NOT click links or open attachments unless you recognize and/or trust the sender. Contact [ICE SOC SPAM](#) with questions or concerns.

Sorry for delay getting to you.

(b)(6);
(b)(7)(C)

(b)(6); (b)(7)(C)

Captain-Corrections

Cumberland County Sheriff's Office

50 County Way

Portland, Maine 04102

Direct: 207-245

(b)(6);
(b)(7)(C)



Notice: Under Maine law, documents - including e-mails - in the possession of public officials or employees about government business may be classified as public records. There are very few exceptions. As a result, please be advised that what is written in an e-mail could be released to the public and/or the media if requested.



Notice: Under Maine law, documents - including e-mails - in the possession of public officials or employees about government business may be classified as public records. There are very few exceptions. As a result, please be advised that what is written in an e-mail could be released to the public and/or the media if requested.



CUMBERLAND COUNTY SHERIFF'S OFFICE

- Kevin J. Joyce
SHERIFF
- Naldo S. Gagnon
CHIEF DEPUTY

36 County Way, Portland, Maine 04102

Phone (207)774-(b)(6); (b)(7)(C) x (207)828-2373

(b)(6); (b)(7)(C)

COVID Positive 09/28/2020 Timeline

1313 (b)(6); (b)(7)(C) came in with (2) Brunswick Officers, (b)(6); (b)(7)(C)
(b)(6); (b)(7)(C)

1316 Both officers exit the cruiser to speak with SPPD Officer (b)(6); (b)(7)(C)
(b)(6); (b)(7)(C) all (3) wearing masks.

1320 Nurse (b)(6); (b)(7)(C) arrive in vehicle
sallyport, all (3) wearing masks.

1323 Nurse (b)(6); (b)(7)(C) speak to (b)(6); (b)(7)(C) through the open car door
window, (b)(6); (b)(7)(C) refuses swab.

1325 Nurse (b)(6); (b)(7)(C) speaks to SPPD arrest (b)(6); (b)(7)(C), opens car door to
get swab

1327 Nurse (b)(6); (b)(7)(C) leaves with Sgt. (b)(6); (b)(7)(C)

1328 BPD speaks with (b)(6); (b)(7)(C) and each other in and out of the cruiser.

1333 Both BPD officers in the cruiser with doors and windows closed.

1345 SPPD arrest, (b)(6); (b)(7)(C) out of cruiser, no mask.

1352 Sgt. (b)(6); (b)(7)(C) (both wearing masks) escort (b)(6); (b)(7)(C) Intake
(Mask is placed on (b)(6); (b)(7)(C))

1354 Gorham PD, Sgt. (b)(6); (b)(7)(C) arrives with arrest (b)(6); (b)(7)(C)

1357 Nurse (b)(6); (b)(7)(C) and CO (b)(6); (b)(7)(C) (both in masks) go to test GPD arrest.

1358 Sgt. (b)(6); (b)(7)(C) (mask) go out to escort (b)(6); (b)(7)(C) into Intake.

(b)(6); (b)(7)(C) 1359 (b)(6); (b)(7)(C) out of cruiser with both BPD Officers, he is barefoot and no mask
on, limping on right foot.

1400 (b)(6); (b)(7)(C) at the pat down counter, CO (b)(6); (b)(7)(C) (masked) passes surgical mask
to CO (b)(6); (b)(7)(C) (masked) for (b)(6); (b)(7)(C) (masked) comes out of photo
room, Lt. (b)(6); (b)(7)(C) (masked) standing at the booking counter, observing.

(b)(6); (b)(7)(C)



□ JAIL 50 County Way, Portland, ME 04102 (207) 774-(b)(6); (b)(7)(C) FAX (207) 879-5600

Maine
Cumberland County

1401 CO (b)(6); (b)(7)(C) comes back in from vehicle sallyport.
1402 (b)(6); (b)(7)(C) (masked) to F230 for refusing all screenings.
1403 SPPD arrest, (b)(6); (b)(7)(C) (masked) to Intake waiting area.
1606 CO (b)(6); (b)(7)(C) (masked) and Nurse (b)(6); (b)(7)(C) (masked) swab (b)(6); (b)(7)(C) in F230.
1632 CO (b)(6); (b)(7)(C) (masked) uses sprayer to sanitize the door, frame, and handle to F230.
1634 CO (b)(6); (b)(7)(C) (masked) gives (b)(6); (b)(7)(C) a mask, takes him out of F230.
1634 CO (b)(6); (b)(7)(C) (masked) and Deputy (b)(6); (b)(7)(C) (masked) walk (b)(6); (b)(7)(C) to Medical.
1635 (b)(6); (b)(7)(C) into Medical A002 Negative Pressure cell, checked as working (Maintenance verified) (b)(6); (b)(7)(C) is C/O on duty (masked).
1658 Capt. (b)(6); (b)(7)(C) (masked) enters Medical.
1701 Capt. (b)(6); (b)(7)(C) (masked), Lt. (b)(6); (b)(7)(C) (masked), Sgt. (b)(6); (b)(7)(C) (masked) enter Medical.
1701 CO (b)(6); (b)(7)(C) (masked) enters Medical to give CO (b)(6); (b)(7)(C) a chow break.
1702 Capt. (b)(6); (b)(7)(C) (both masked) enter A002 vestibule to give (b)(6); (b)(7)(C) (masked) a bail call on speaker phone through the food chute.
1710 CO (b)(6); (b)(7)(C) (masked) leaves Medical for break.
1714 Capt. (b)(6); (b)(7)(C) all leave Medical (all masked).

EOR

Captain (b)(6); (b)(7)(C)



□ JAIL 50 County Way, Portland, ME 04102 (207) 774- (b)(6); (b)(7)(C) FAX (207) 879-5600

Maine
Cumberland County